



## **Design & Construction Management Services**

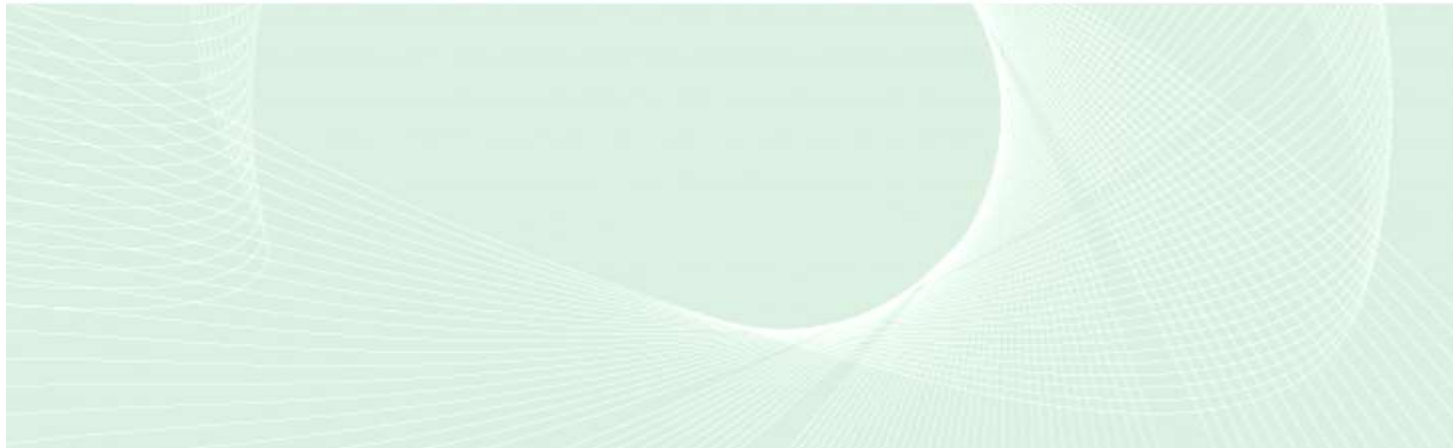
**International Facility Engineering Pte Ltd**

10 Science Park Road,  
The Alpha, #03-03,  
Science Park II  
Singapore 117684

Tel.: +65 – 6776 7308  
Fax: +65 – 6776 0761  
Email: [engineering@intl-fe.com](mailto:engineering@intl-fe.com)

# Content

- **Company Introduction**
- **Engineering Services**
- **Design & Construction Management**
- **Project References**
- **Contact & Locations**



# Company History



## Historical Background

The company was founded early **2007** in Singapore by individual Engineers, in order to realize a “General Contractor independent” Design & Construction Management company. We understood from a wide customer base, that these companies are no longer willing to accept that large scale multi national companies dominate the market without real alternatives. Therefore IFE today is positioned to provide real customer oriented services for Design & Construction Management of High Tech facilities.

We at IFE bring together the strongest talents from all over the globe, to ensure that we will continue to meet client expectations.

## Contract approaches

The past was dominated by large GC's, which realized Projects on a “Turnkey Lump sum’ basis. Client teams of today are more experienced and educated, whereas today's market place faces more and more challenges and conclusively clients are favoring the “EPCM” or “Open Book” approach.

We belief that the future has come for “Hybrid Contracts”, whereas the EPCM contracts with some degree of “Direct Contracting “ of individual packages will provide End Customers real advantages.

The rapid transition of the contractual approaches asks for flexible, professional and independent DCM companies, to support the principle of a competitive market place.

## Our Mission

Our mission is to fill “the niche” of a competent and independent **Design & Construction Management service provider**, whereas we believe that obtaining and maintaining the status of a trustworthy “In House engineering service provider” represents still the single most important aspect for a company to ensure satisfied clients and repetitive business.



# Company History & Mission



## Company History

The company was founded in 2007 by Engineers, in order to provide our clients the choice to engage an “Contractor independent” Design & Construction Management company.

In 2018, Kajima Overseas Asia invested in International Facility Engineering.

International Facility Engineering is now a member of the KAJIMA Corporation group of companies and with that comes the financial backing and additional security of the KAJIMA Corporation to further enhance our capabilities.



## Our Mission

We strive to become the niche market leader for the provision of Design & Construction Management services serving the high tech industry in South East Asia.

Therefore we believe that obtaining and maintaining the status of a trustworthy partner and “In House engineering service provider”, represents still the single most important goal for our company, in order to ensure satisfied clients and repetitive business.

### ■ IFE Office Locations

### ■ IFE Project Locations

China  
Germany  
Italy  
India  
Indonesia  
Malaysia  
Philippines  
Singapore  
Thailand  
Taiwan  
United Arab Emirates  
Vietnam



# Core Values - Social Responsibility

## CORE VALUE

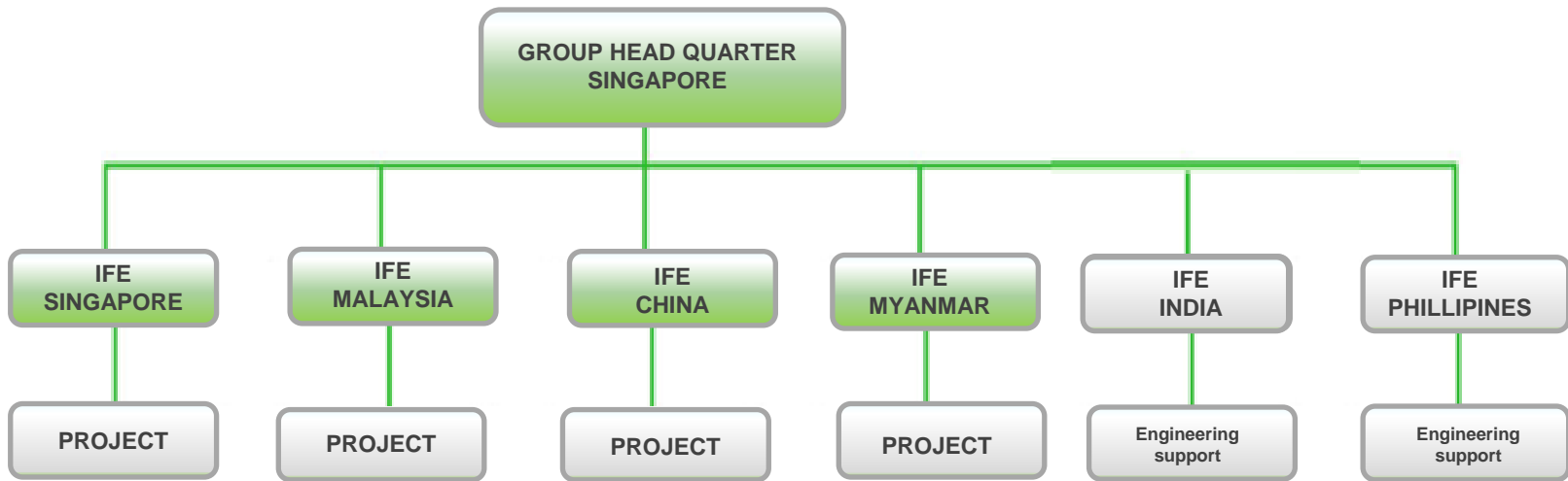
We at IFE are a homogeneous team of various nationalities, backgrounds and cultures. The common factor binding us is our motivation to build a global organization. Our experiences and origins out of Asia & Europe provide us the unique advantage of utilizing the best of both worlds. The historical background of each of our people demonstrates our commitment and contribution towards a sustainable future. Provision of functional, economical and technically best possible solutions for our client are our basic elements.

## VALUE ENGINEERING

Our mission is to bring value to our customers with maximum effort, everyday and with everything we do.



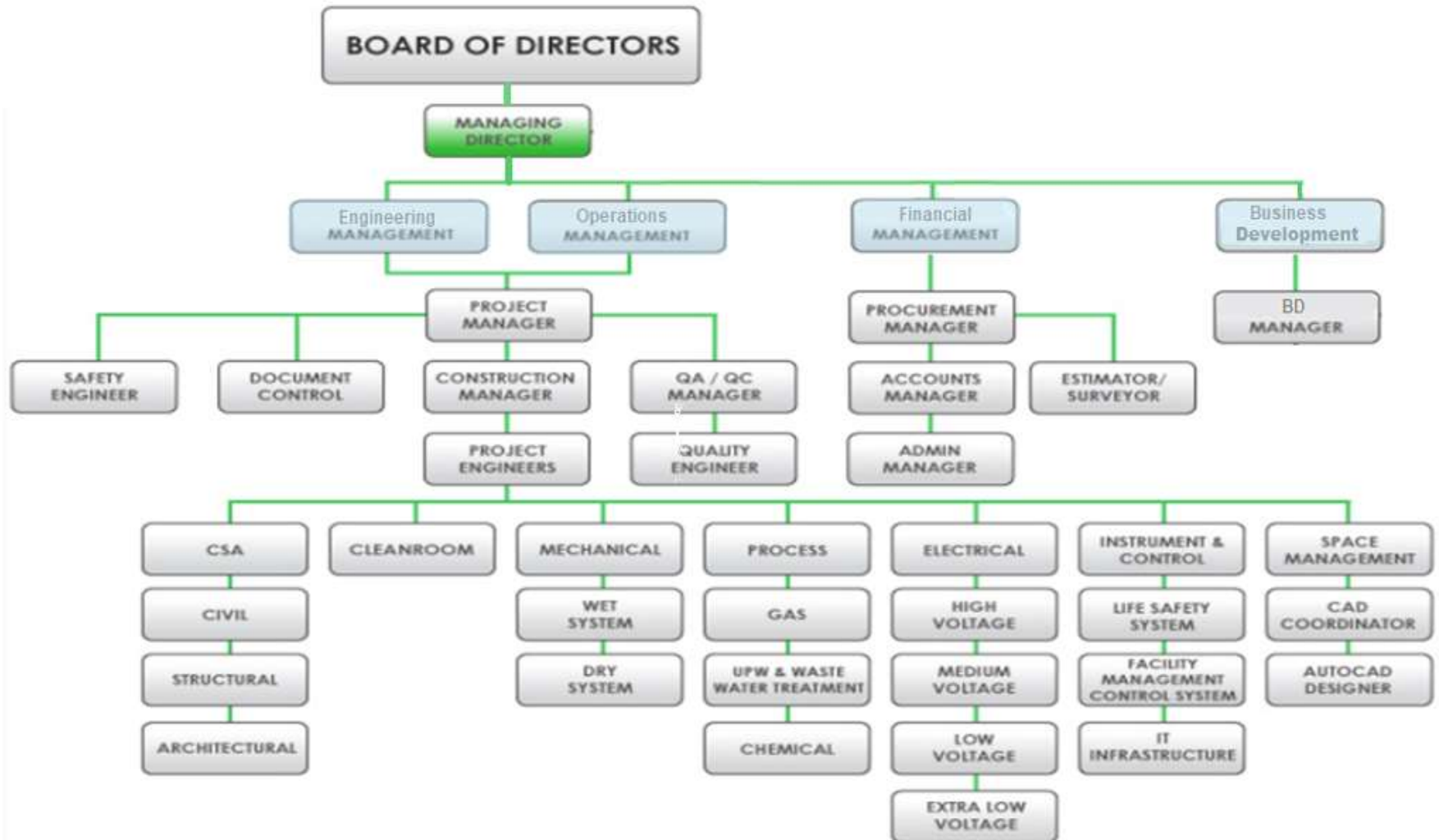
# Group Structure - IFE



<b>Company :</b>	Multinational and Employee managed / owned Company, established in Feb 2007
<b>Management Team:</b>	"Young Team", with 10 – 15 years Management and Project Execution experience, pre-dominantly in the field of Industrial High Tech applications.
<b>Engineering Team:</b>	Diverse engineering pool of Local Talents & Expatriates
<b>AutoCAD Design:</b>	Well trained team of Local Talents & Expatriate Designers



# Company Organization - IFE



# Client Strategies

- Facility Engineering with emphasis on Construction feasibility
- Direct Support function for End Customers or Engineering firms
- Owners representing Engineering services
- Obtain and maintain “In house” Contractor status from End Customers
- Implementation of Country specific Entities – India / Philippines under consideration
- Strategic Project Joint Ventures (JVs), in order to serve wider Customer base
- EPMC Services for High Tech Industry Projects
- Project Locations: Singapore / Malaysia / China / Thailand / Indonesia / Myanmar
- New Markets: India, Philippines, Vietnam, Europe





# Resources

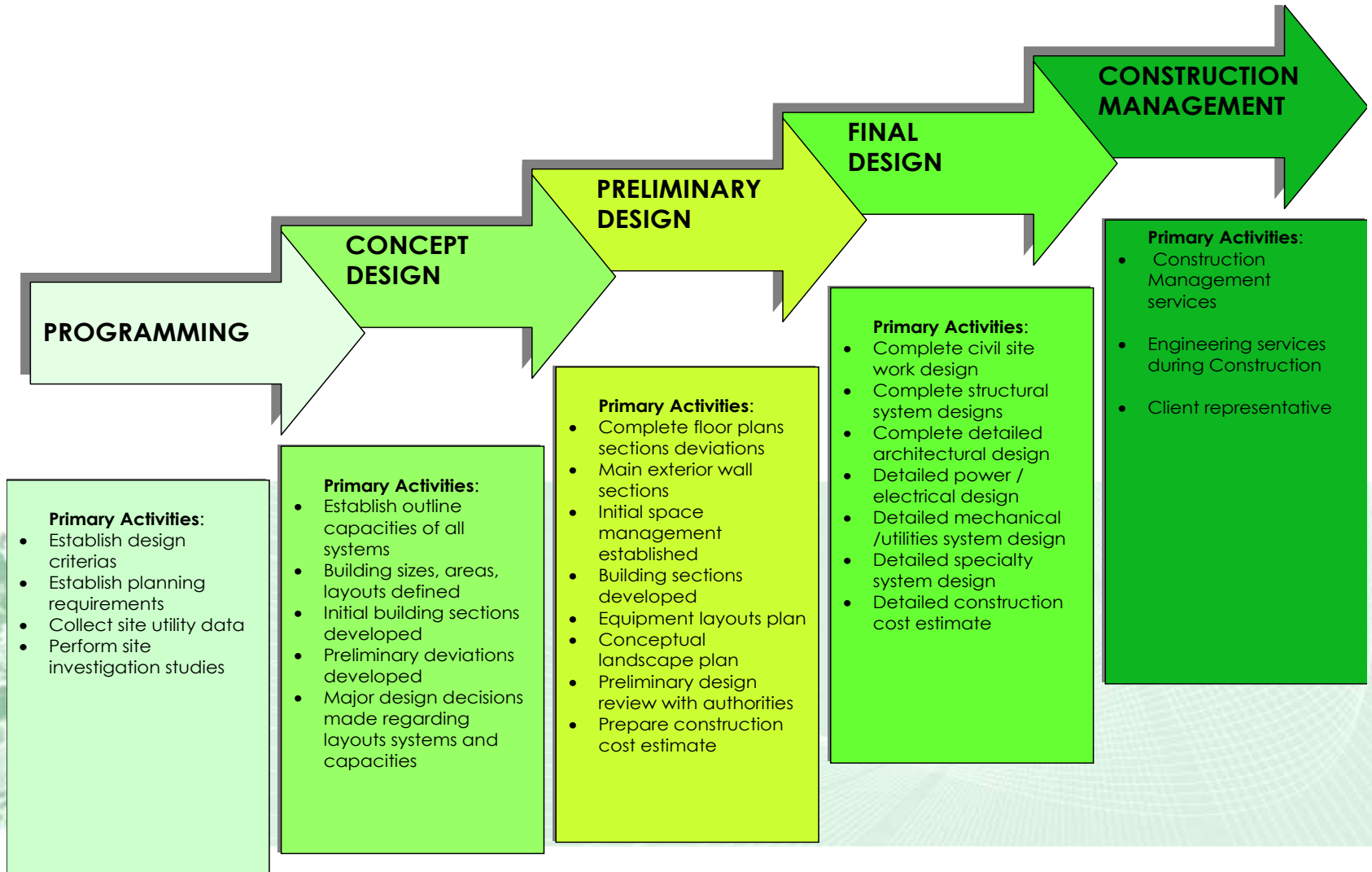
- **Office Setup:**
- **HQ in Singapore** established in 2007
  - **Company in Malaysia** established in 2008
  - **Company in China** established in 2014
  - **Company in Myanmar** established in 2016
  - **Company in India** incorporation ongoing
  - **Company in Philippines** incorporation ongoing
  - **Company in Indonesia** incorporation planned

■ **Personnel:**

- **Local hiring** ongoing, according Project needs
- **Total head count:** 155 employees
- **Employees Background:**
  - 100% direct employees
  - 95% engineering background



## **Design & Engineering Services**



# Engineering services

## Basis of Design

- Master Planning
- Functional Programs
- Area Programs
- Layouts
- Cost Estimations
- Value Engineering
- Feasibility Studies
- Cost, Area and Capacity Benchmarking
- Quality Specifications

## System Design

- Civil, Structural & Architectural
- Cleanroom Systems
- HVAC Systems
- Mechanical Systems
- Process Mechanical Systems
- Electrical Systems
- Control Systems
- Life Safety & Security Systems
- Chemical Supply and Discharge
- CMP-Systems
- Ultrapure Water Plants
- Wastewater Treatment Plants
- Bulk Gas Supply
- Specialty Gas Supply
- Exhaust Systems
- Toxic Exhaust Systems
- Material Specifications
- Space Management / BIM modelling

## Project Management

- Preparation of Tender Documents
- Bid Evaluation
- Procurement Services
- Project Controlling
- Quality Controlling
- Public Approvals
- Time Schedule Controlling
- Cost Controlling
- Change Order Management
- Final Acceptance Management





# Construction Management Services

# Construction Management - Overview

- **Construction Management, Field Engineering and Space Management**
- **Value engineering and constructability reviews**
- **Expediting of materials and equipment, research on local construction market conditions**
- **Detailed construction schedule incl. contractual milestones**
- **Pre-construction Services**
- **Cost control, change order procedure and cash flow forecast**
- **Construction reporting guidelines, site meeting frequency**
- **Construction progress monitoring system**
- **Construction method statements and approval of construction materials**
- **Construction site access and logistics, security plan and clean protocol**
- **Startup + Commissioning Services**
- **Design verifications and Installation qualification services**
- **Environmental, Health and Safety procedures**

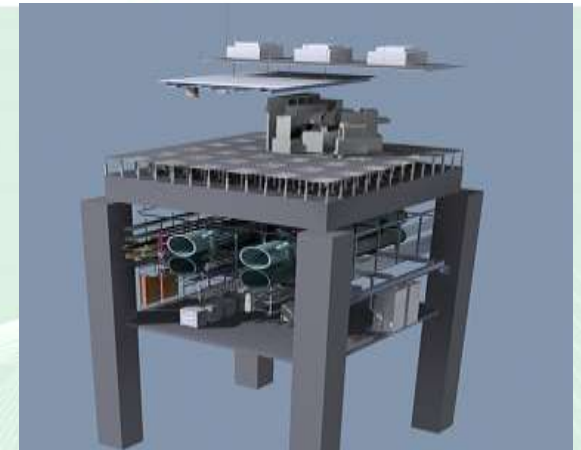




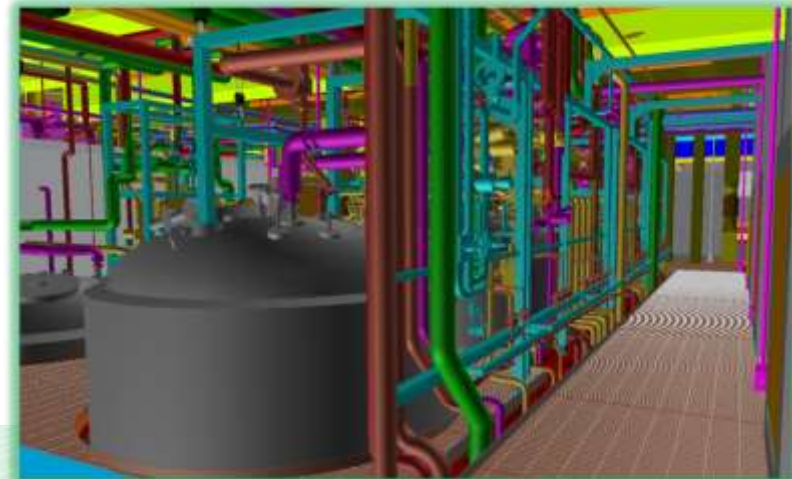
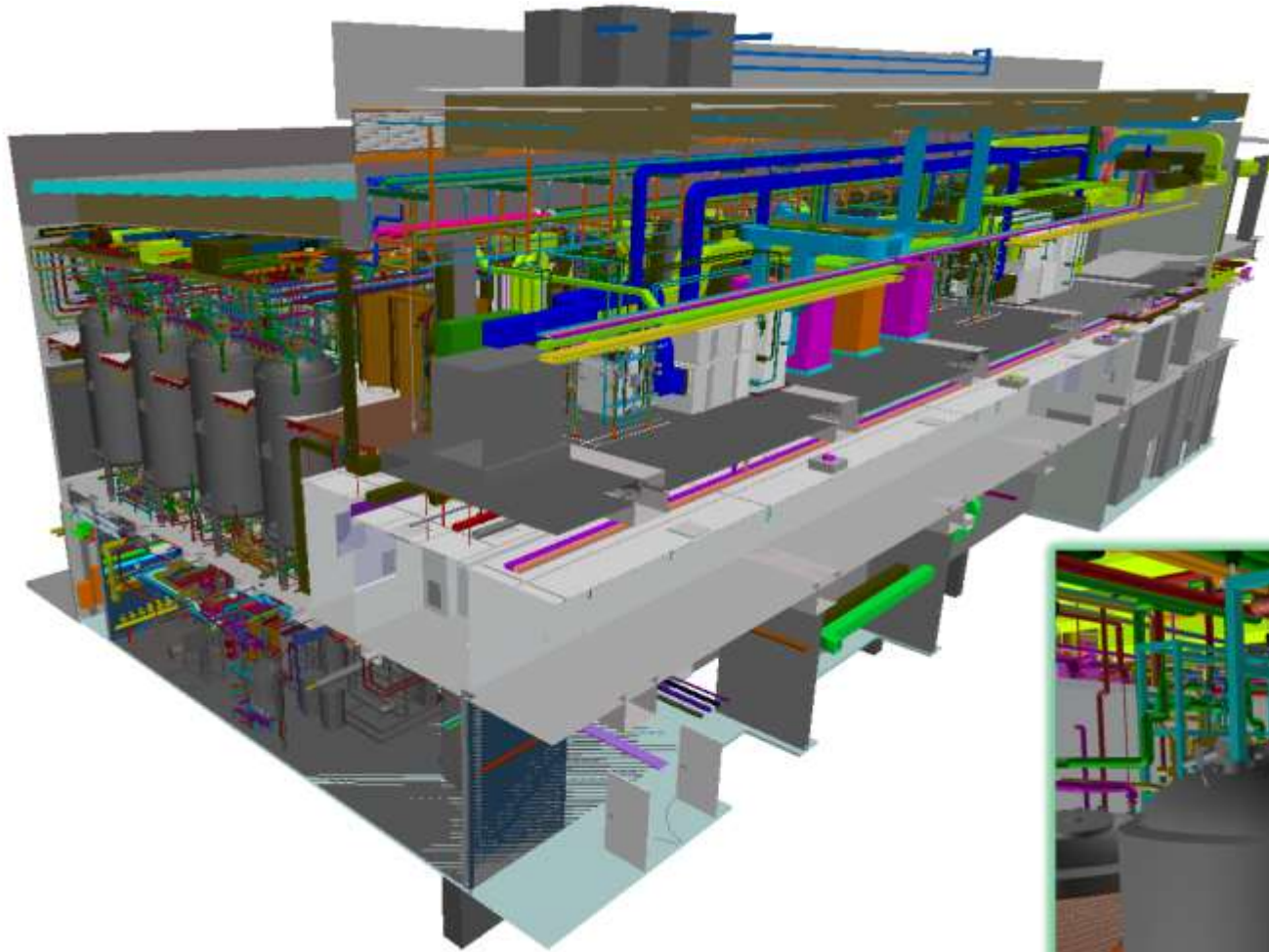
## Space Management Services

## Benefits of smart 3D - Space Management

- Optimized space management concept in real time
- Collisions and clash free installations can be 100% visualized
- Parts list for material purchase can be generated automatically
- Time for construction documentation can be reduced (As build drawings)

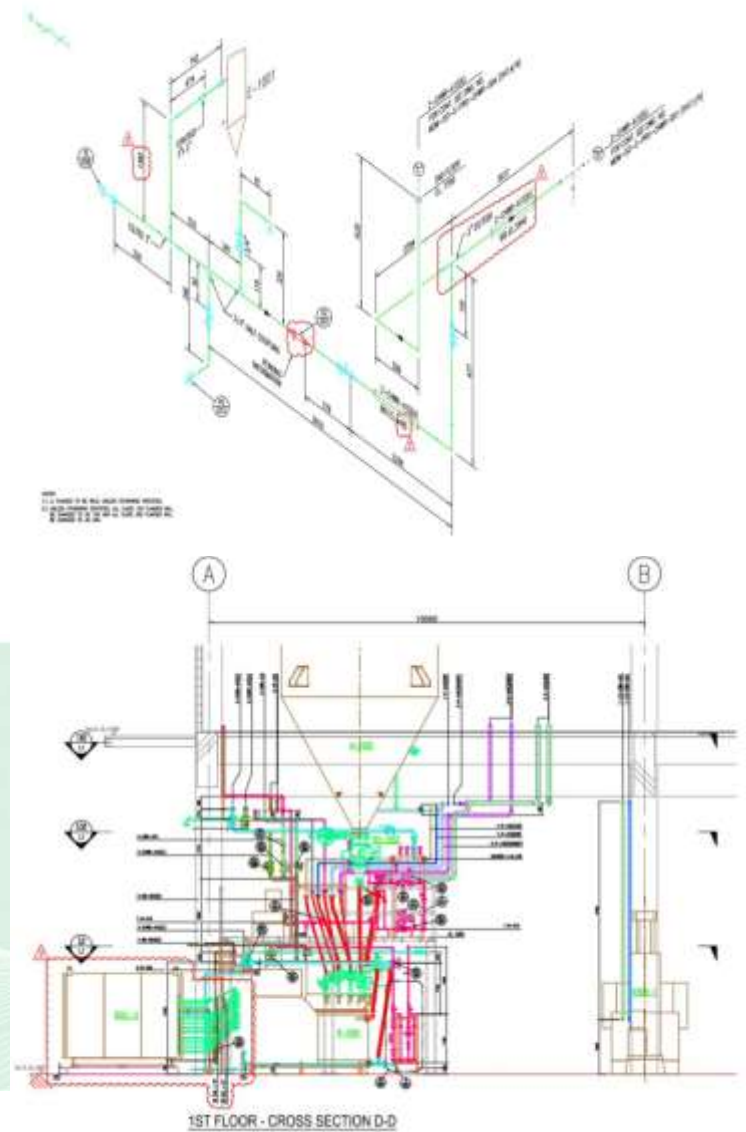
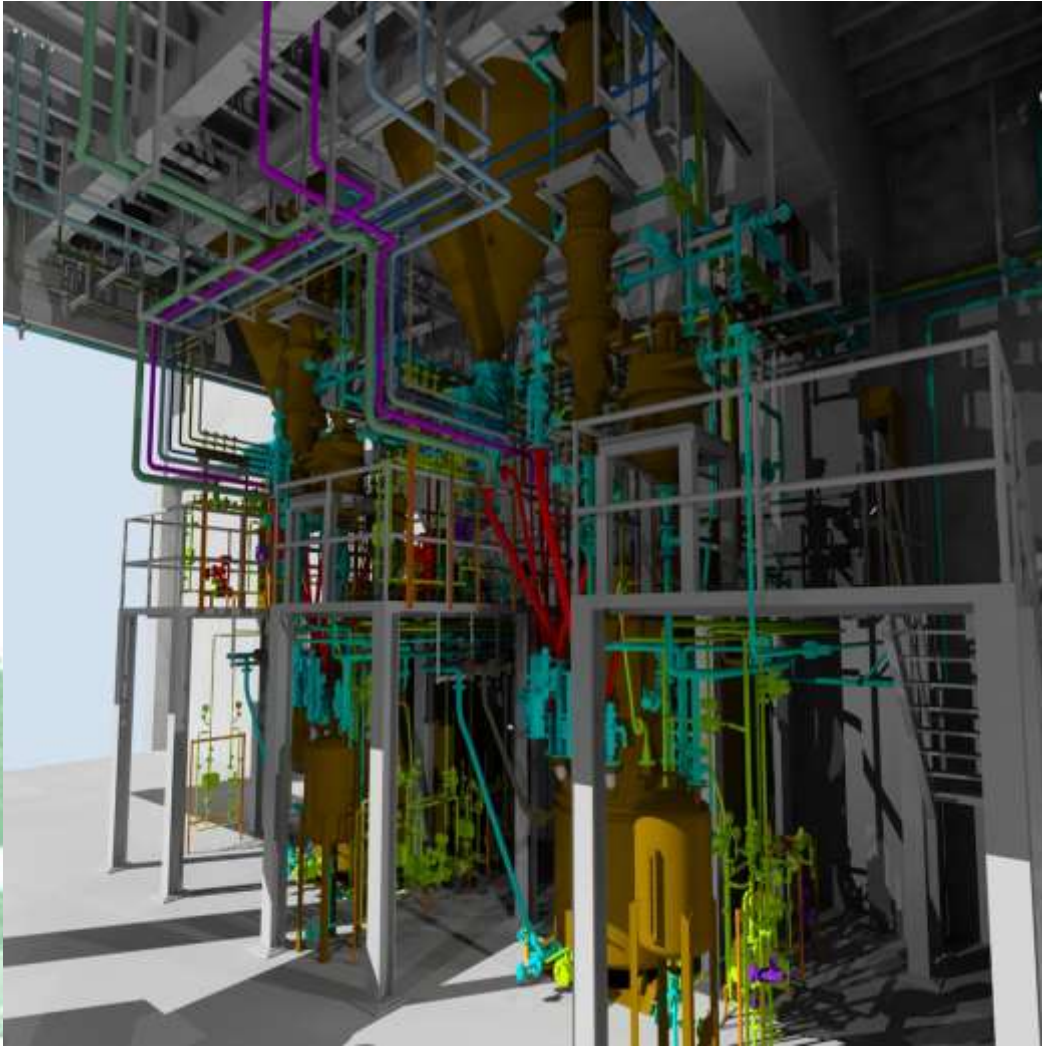


# Building Information Modeling (BIM )

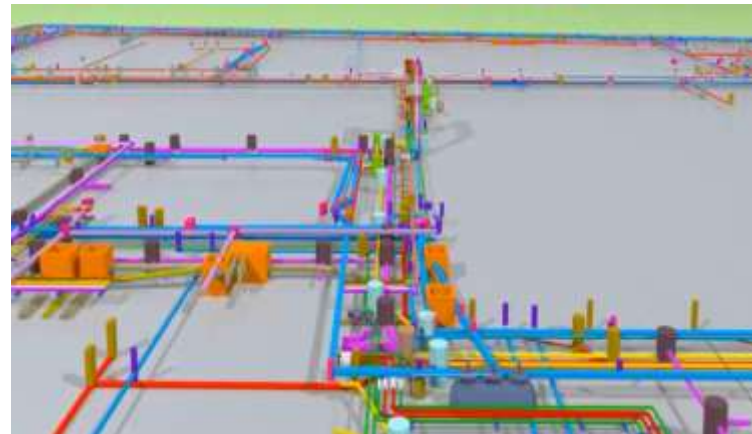
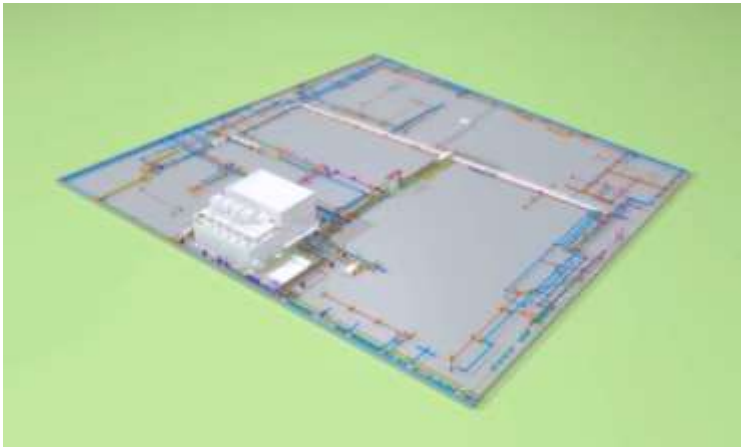




# Building Information Modeling (BIM )

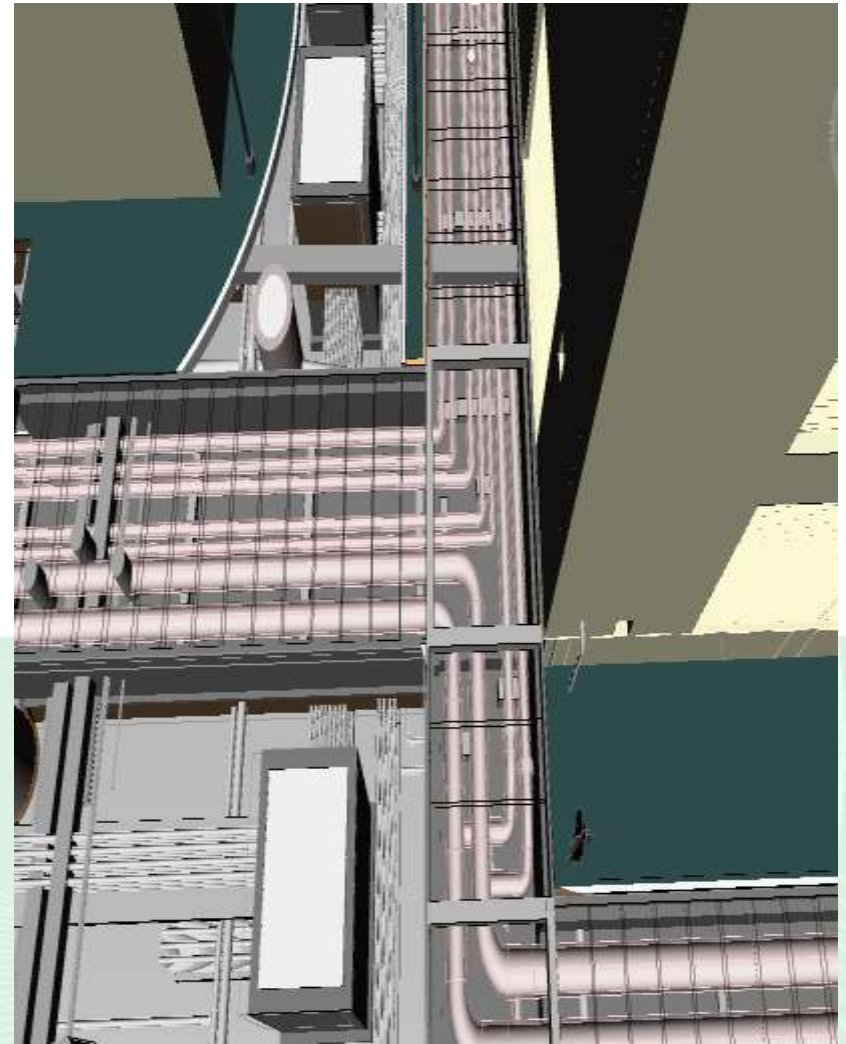


# 3D Space Management – Utility services



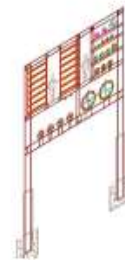
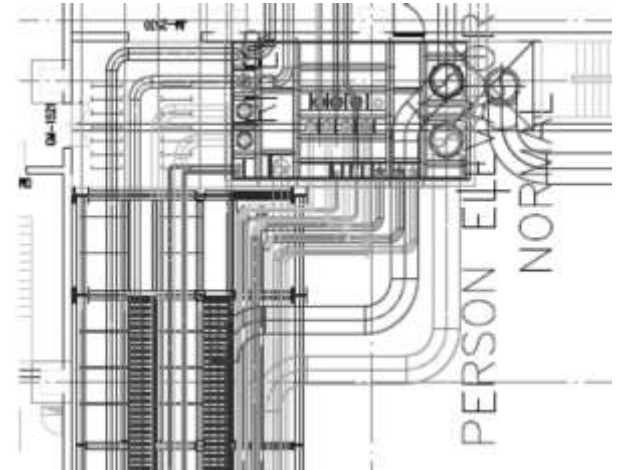
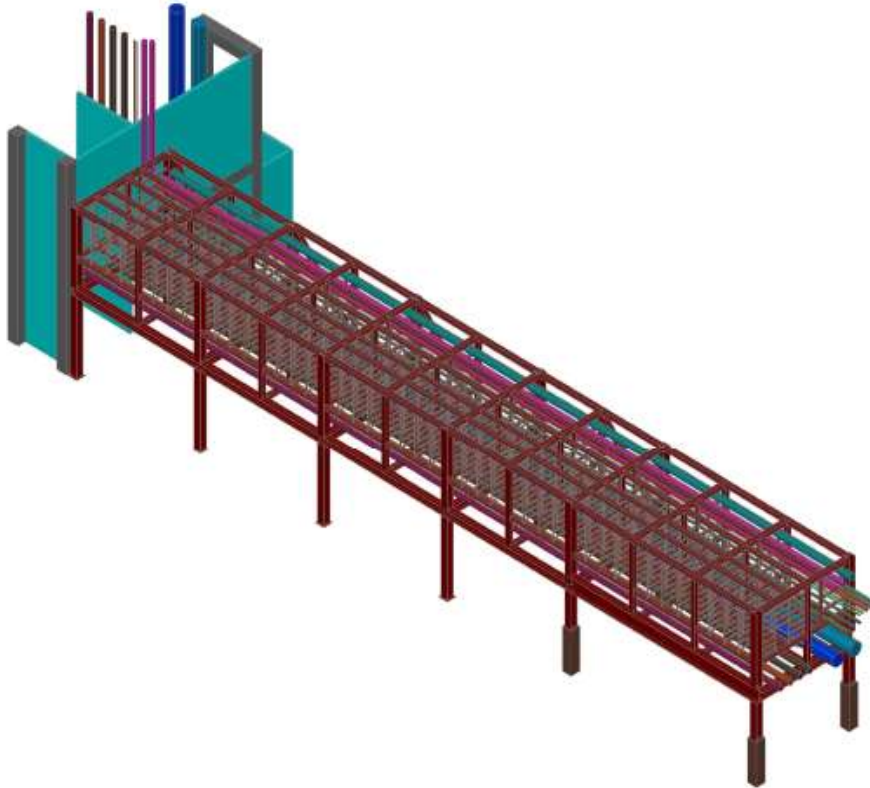


## 3D Space Management – Utility services

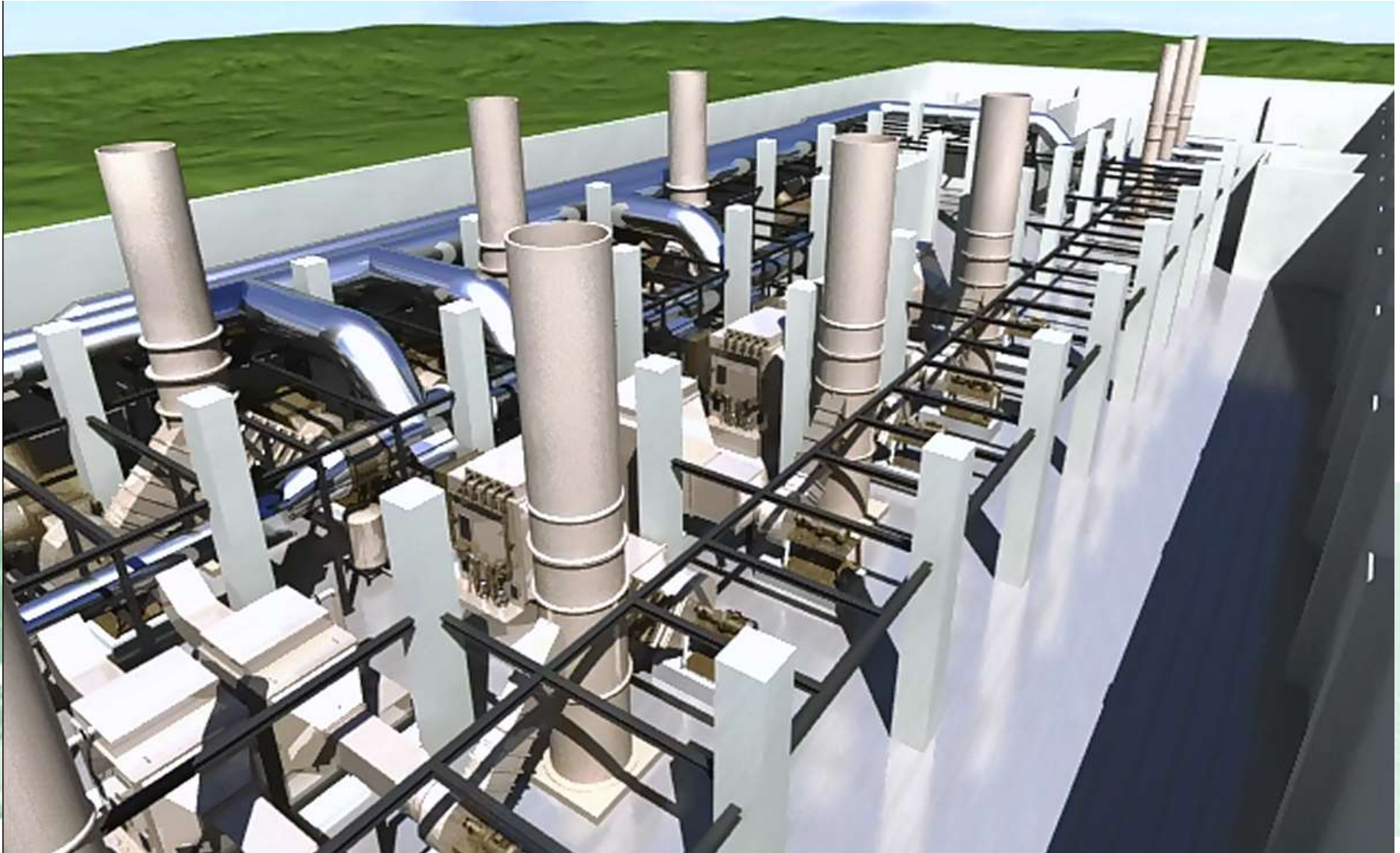




# 3D Space Management – Utility services

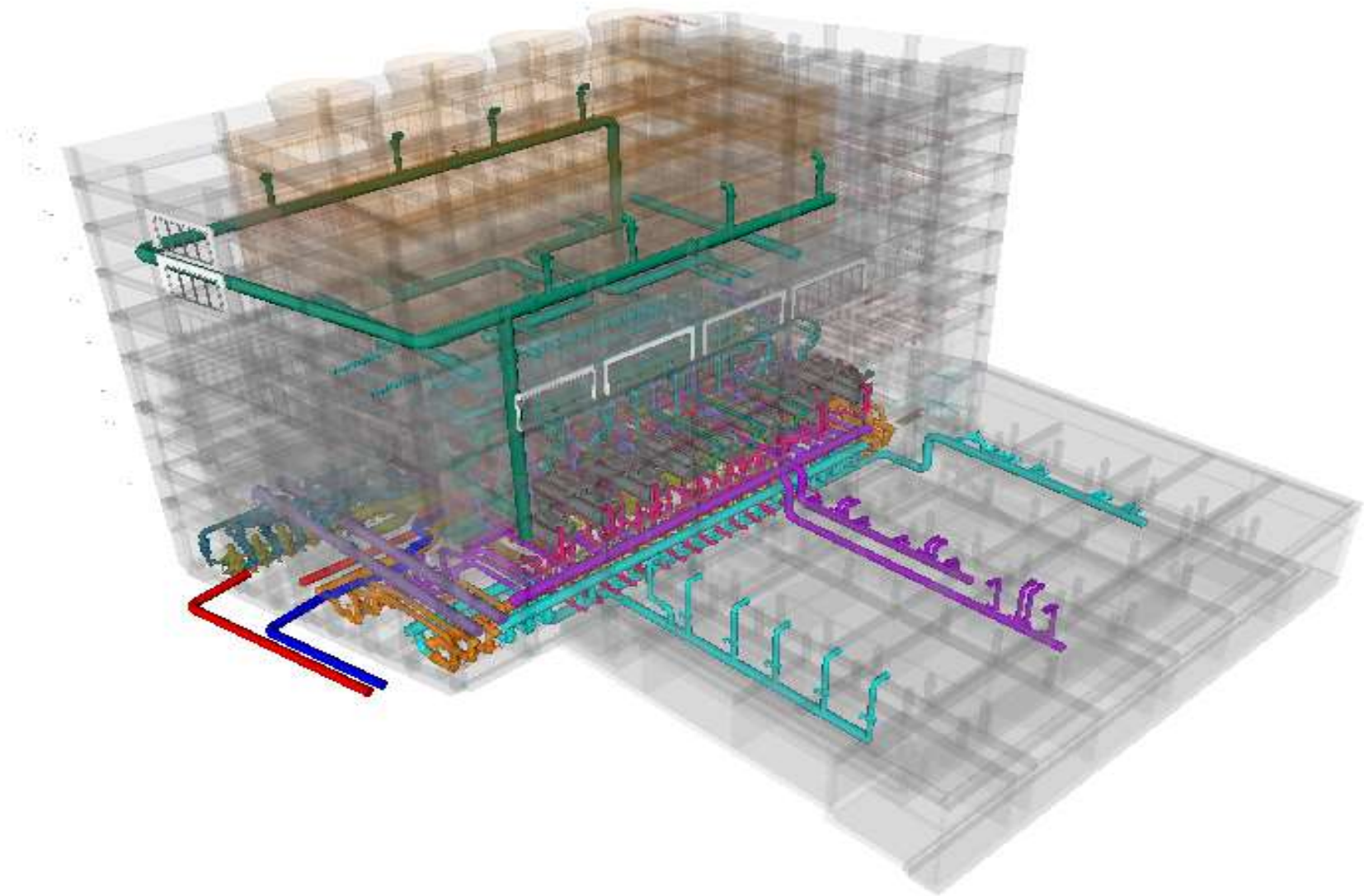


## 3D Space Management – Utility services

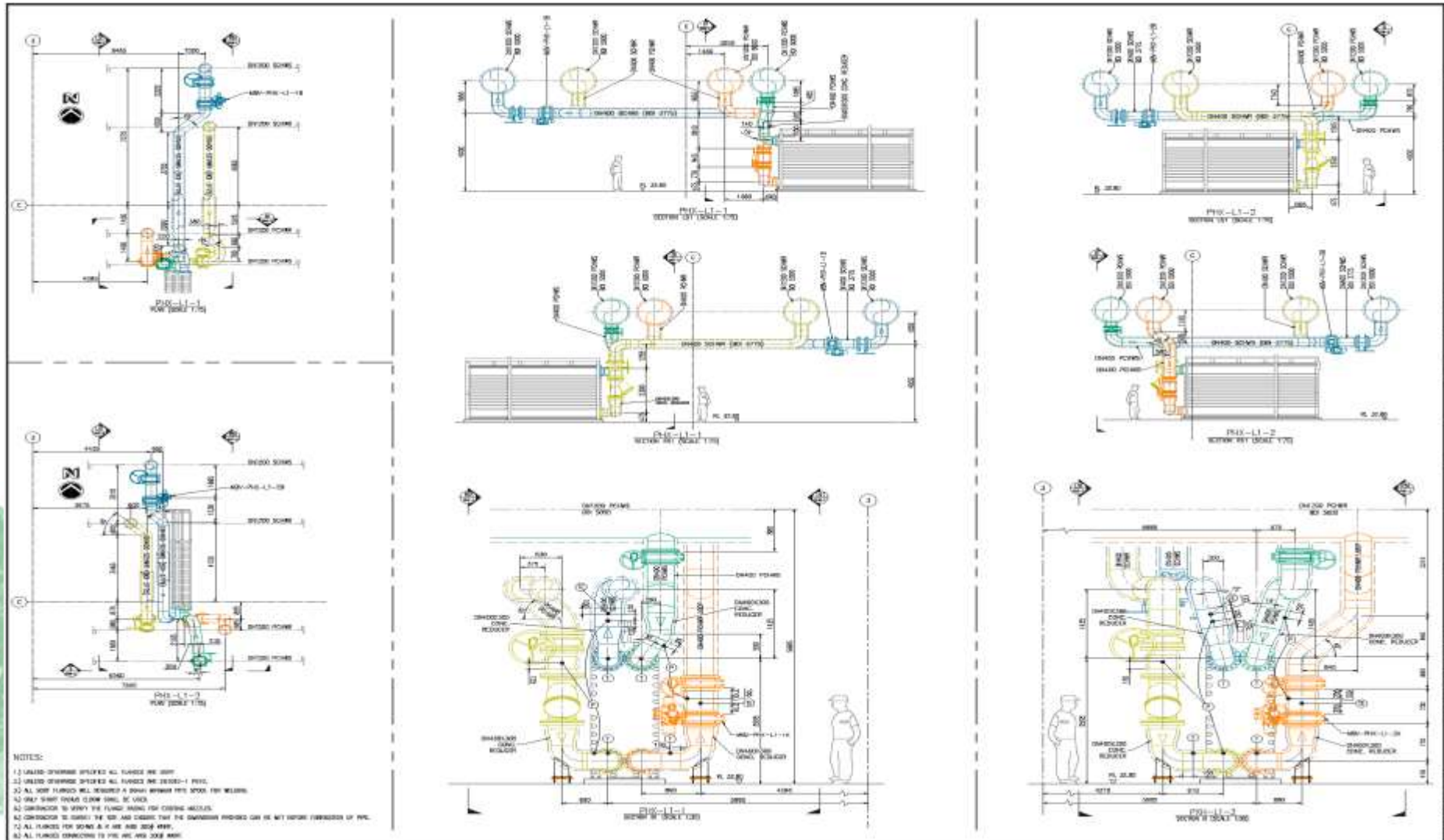




## 3D Space Management – Utility services

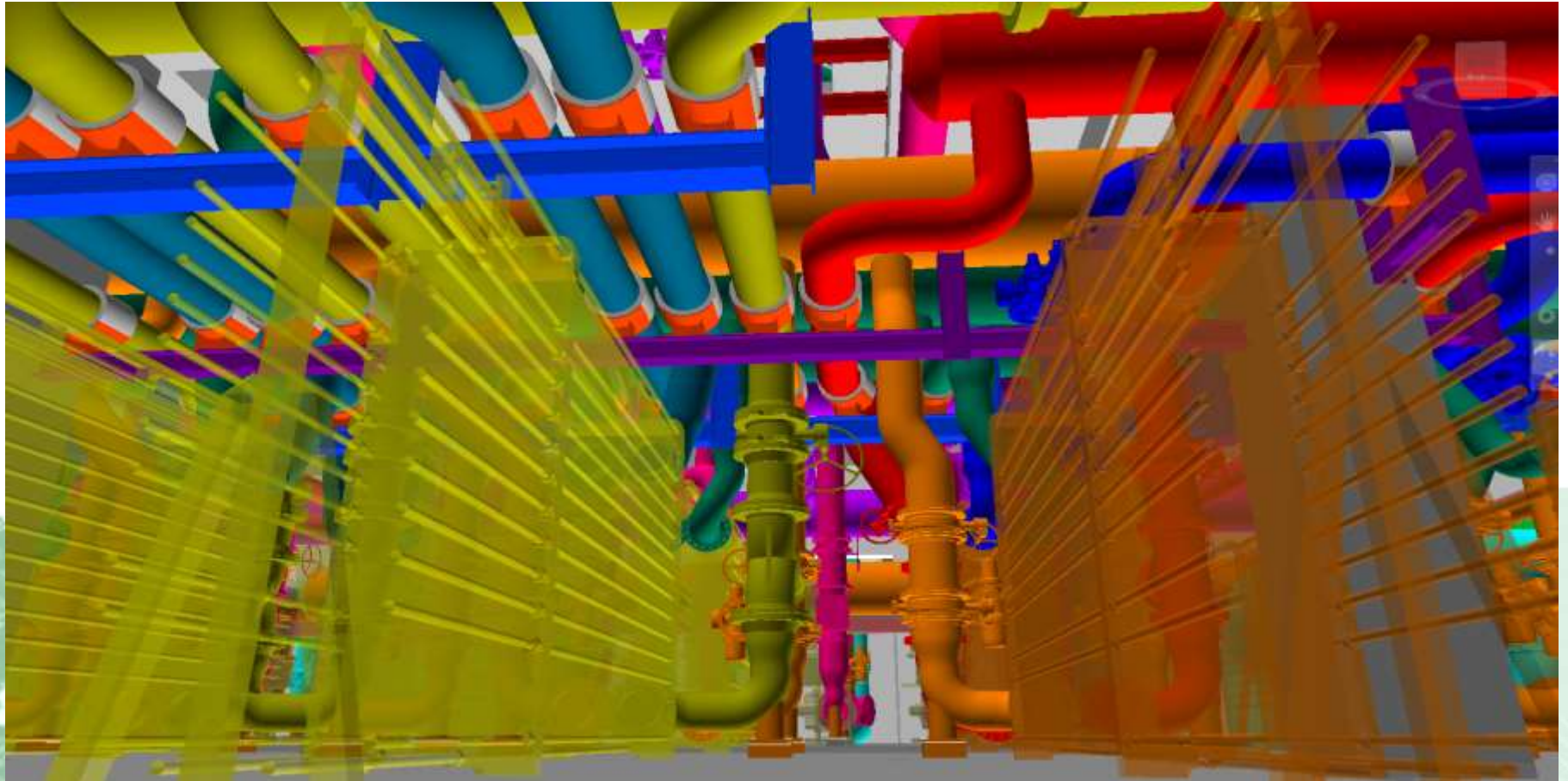


## 3D Space Management – Utility services

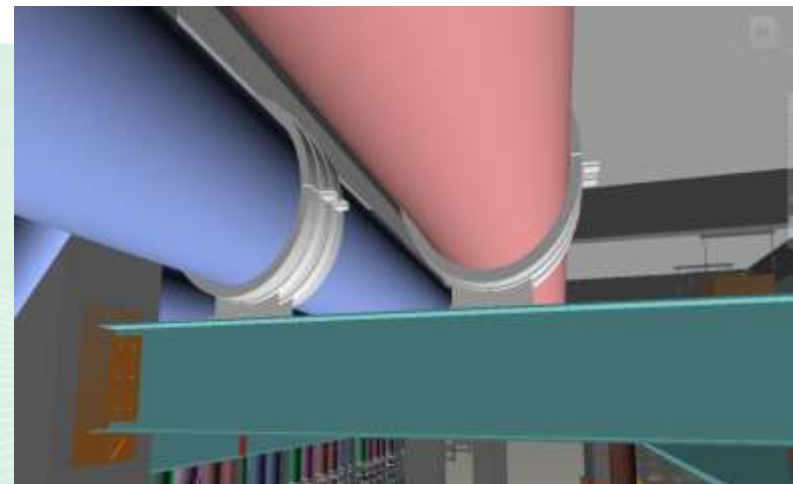
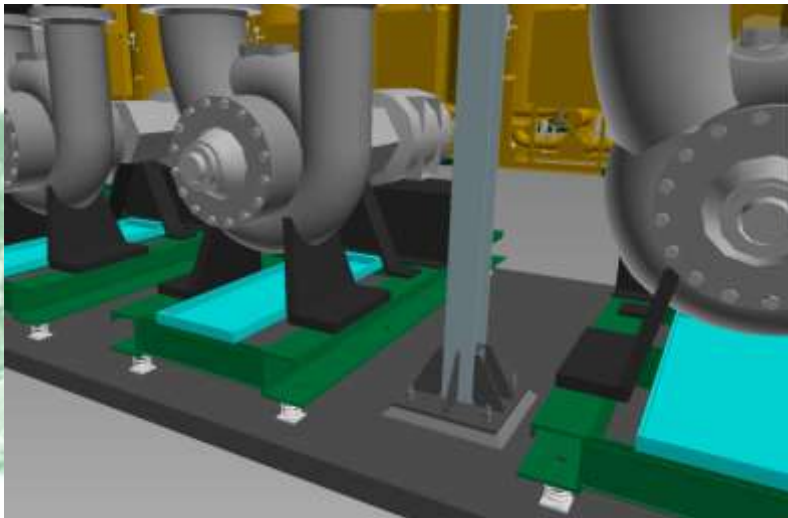
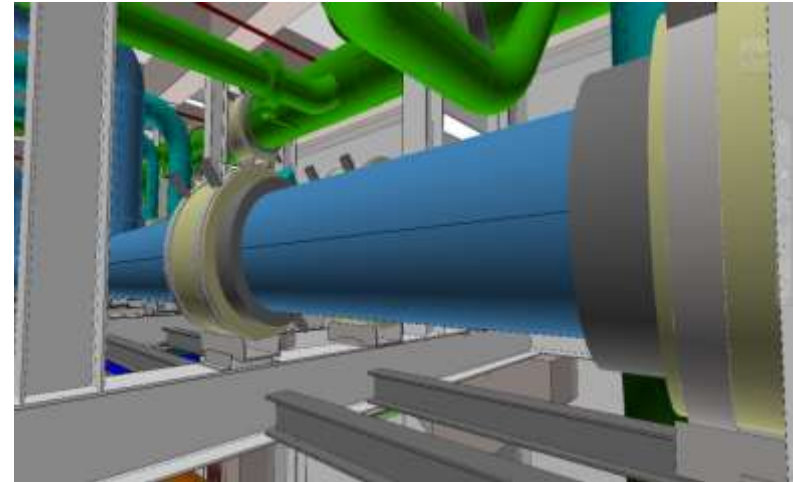
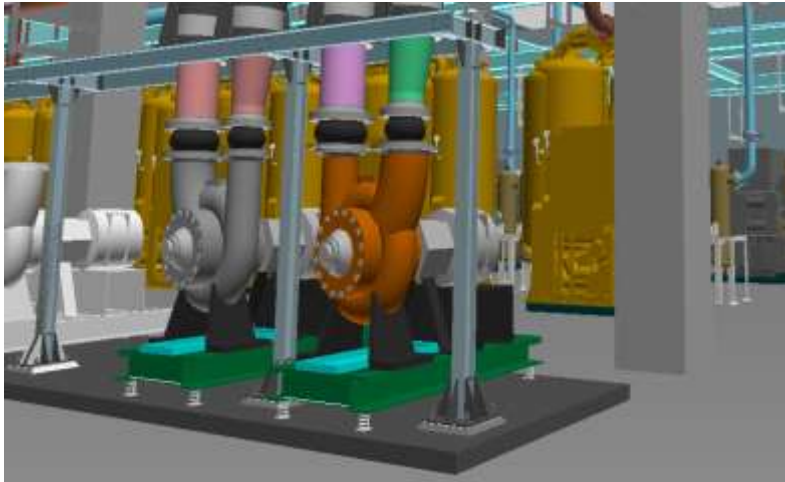




## 3D Space Management – Utility services



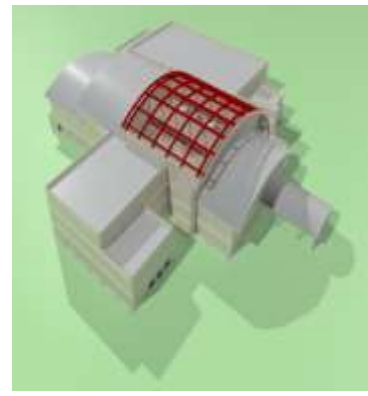
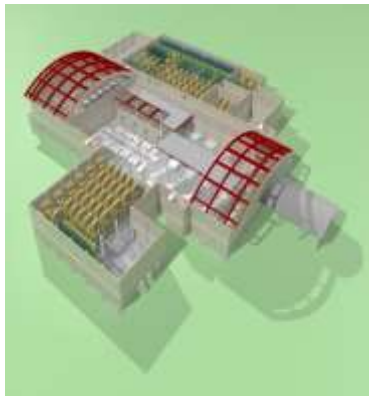
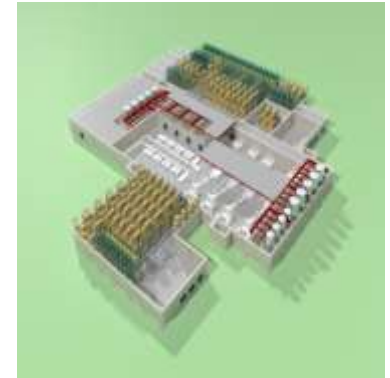
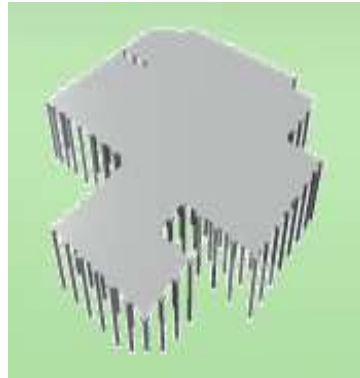
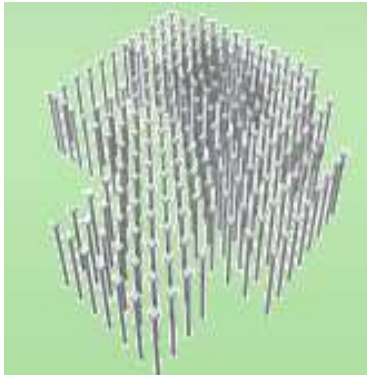
## 3D Space Management – Utility services





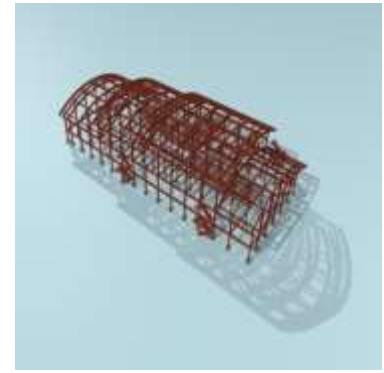
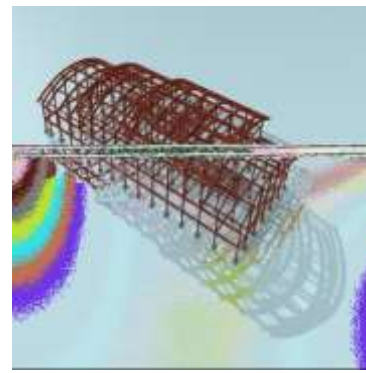
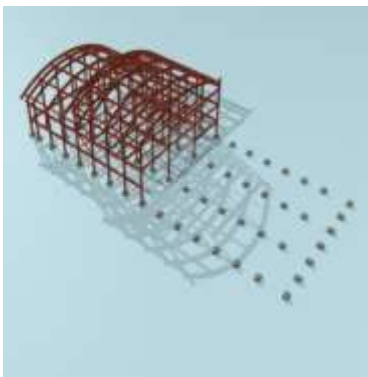
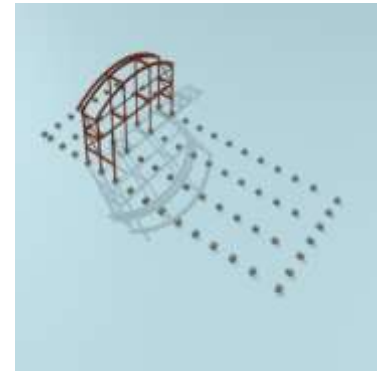
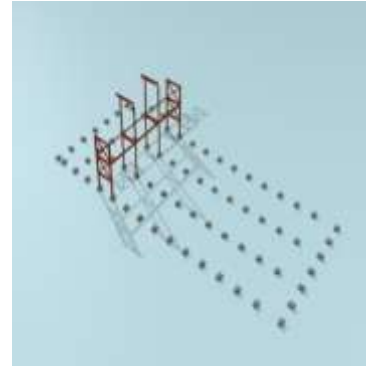
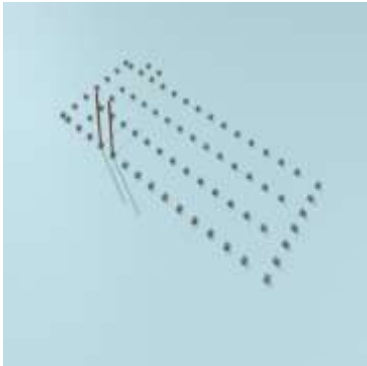
# Project Implementation Plan

- Interpretation of Project CSA Design intent - 3D Visualization



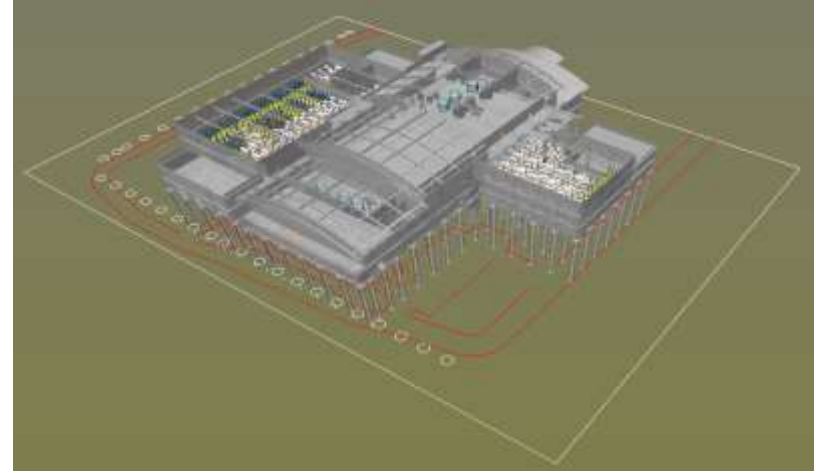
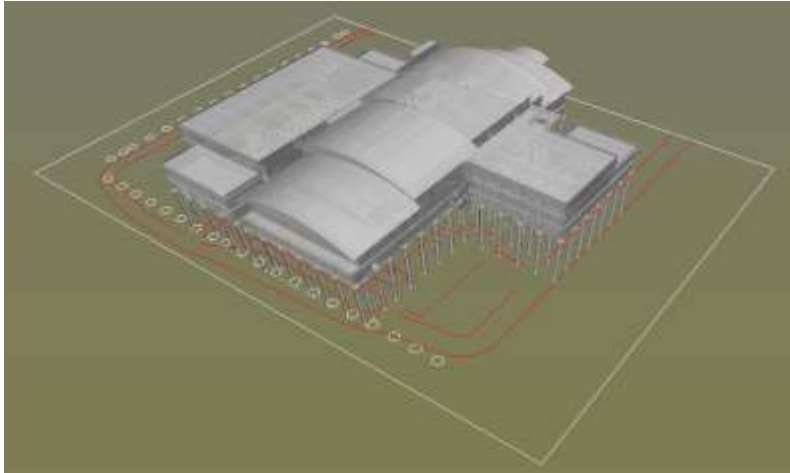
# Project Implementation Plan

- Interpretation of Steel Works Design intent - 3D Visualization



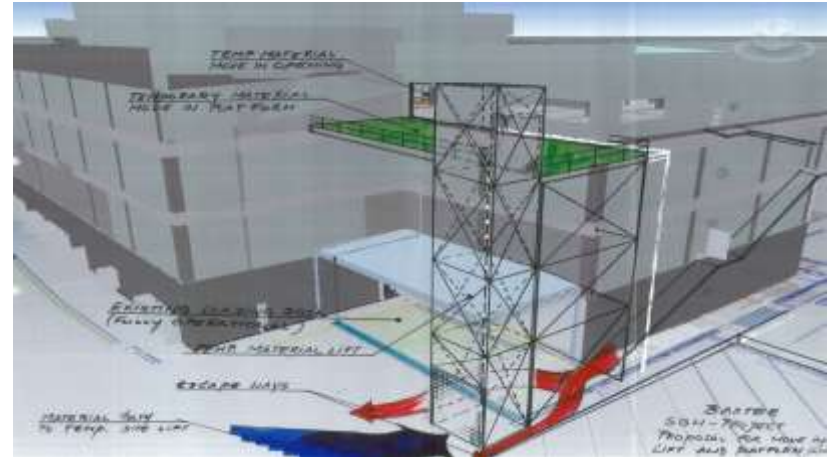
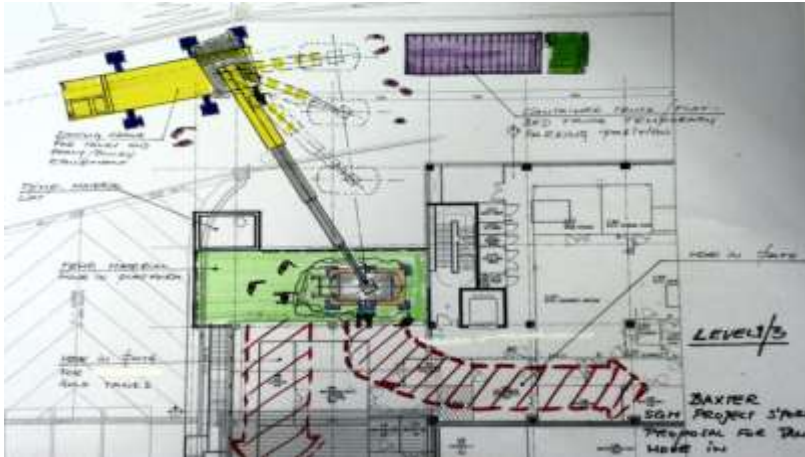
# Project Implementation Plan

- Interpretation of MEP Design intent - 3D Visualization



# Project Implementation Plan

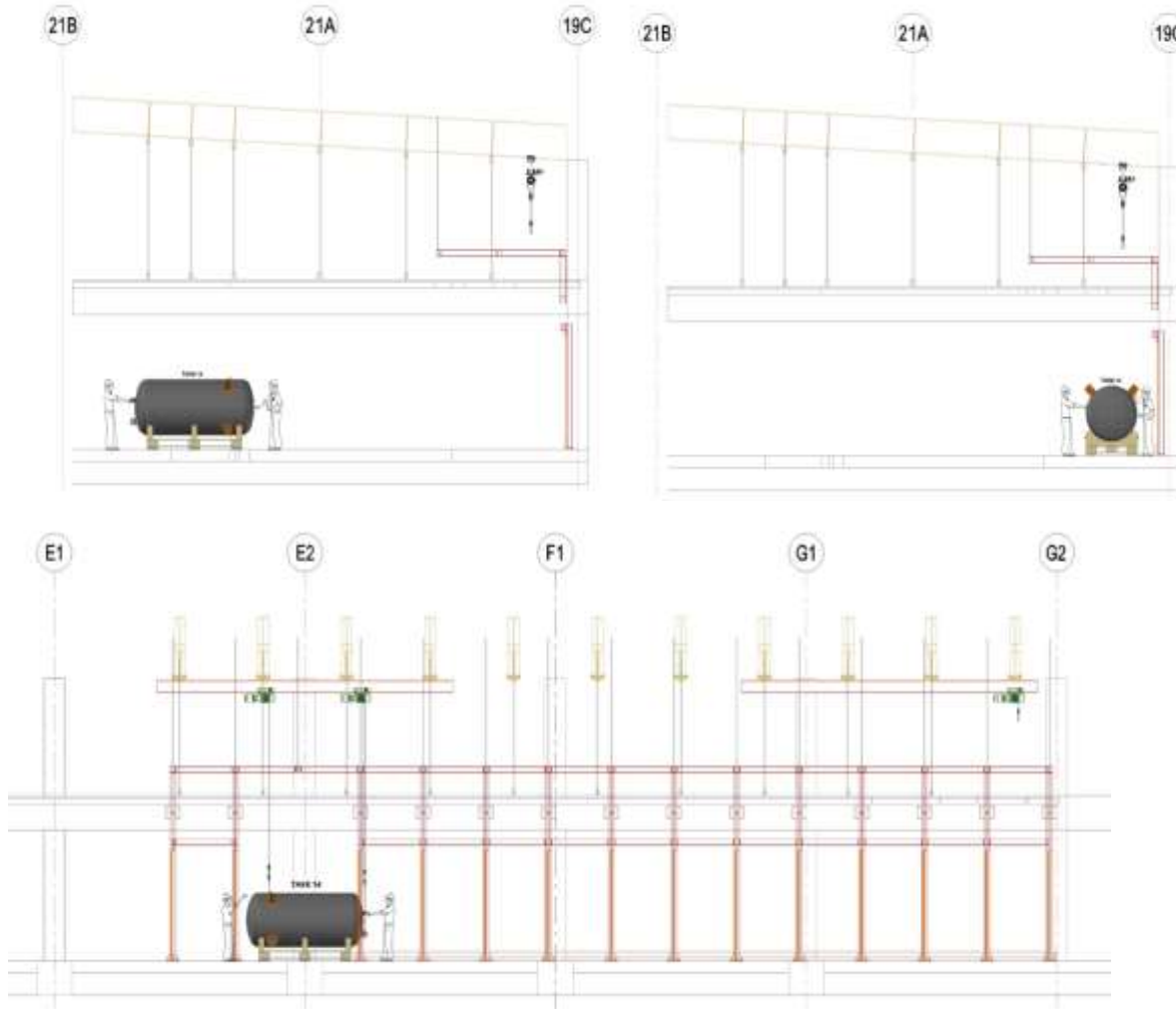
## ■ Equipment Move In Path – Platforms





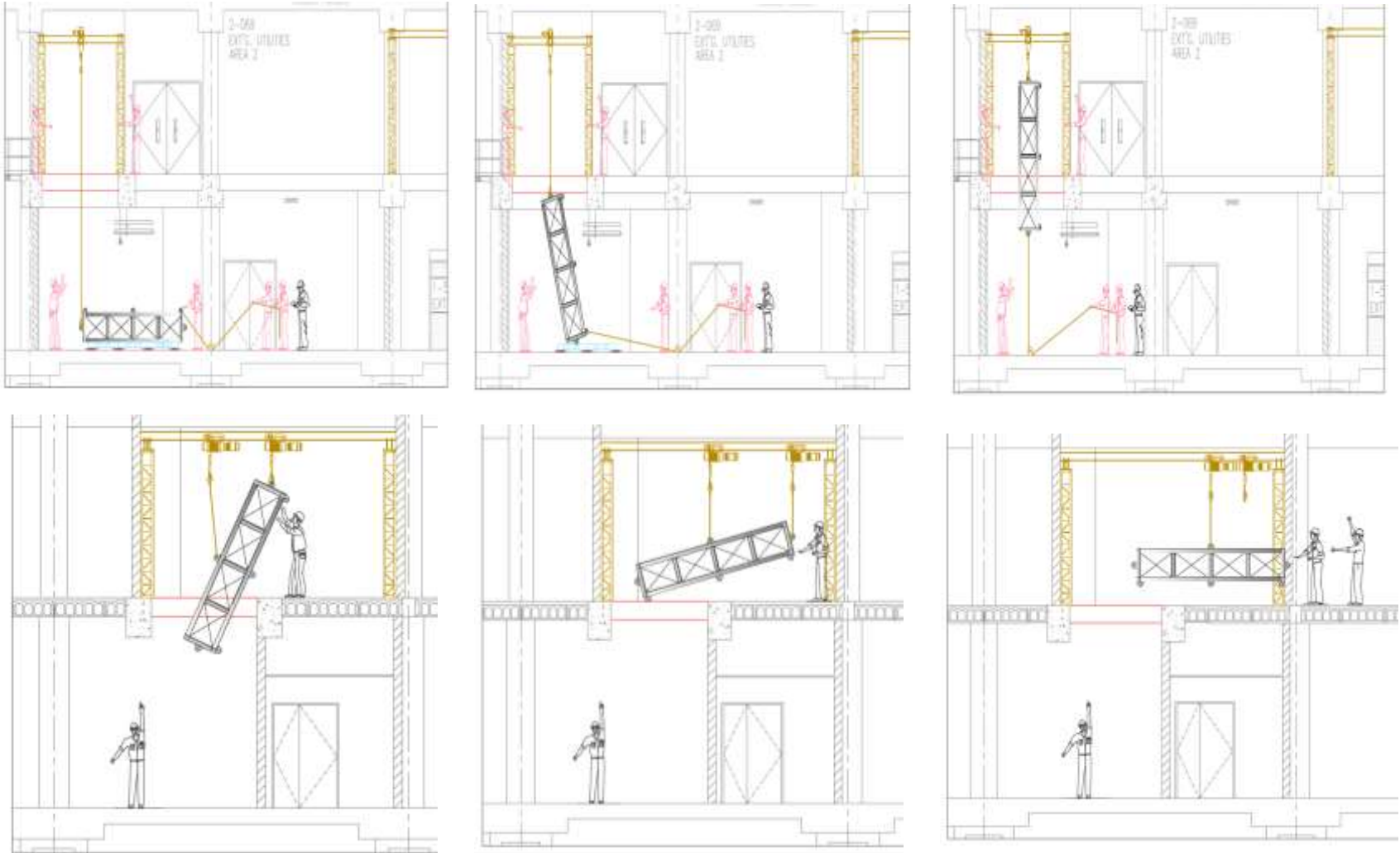
# Project Implementation Plan

## ■ Tank Move In - Sequencing



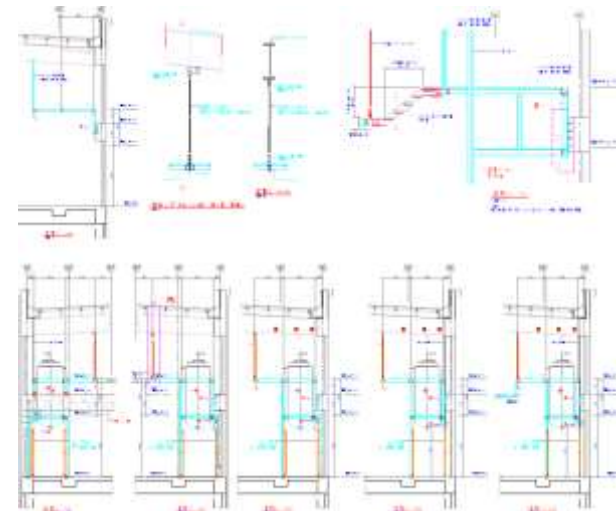
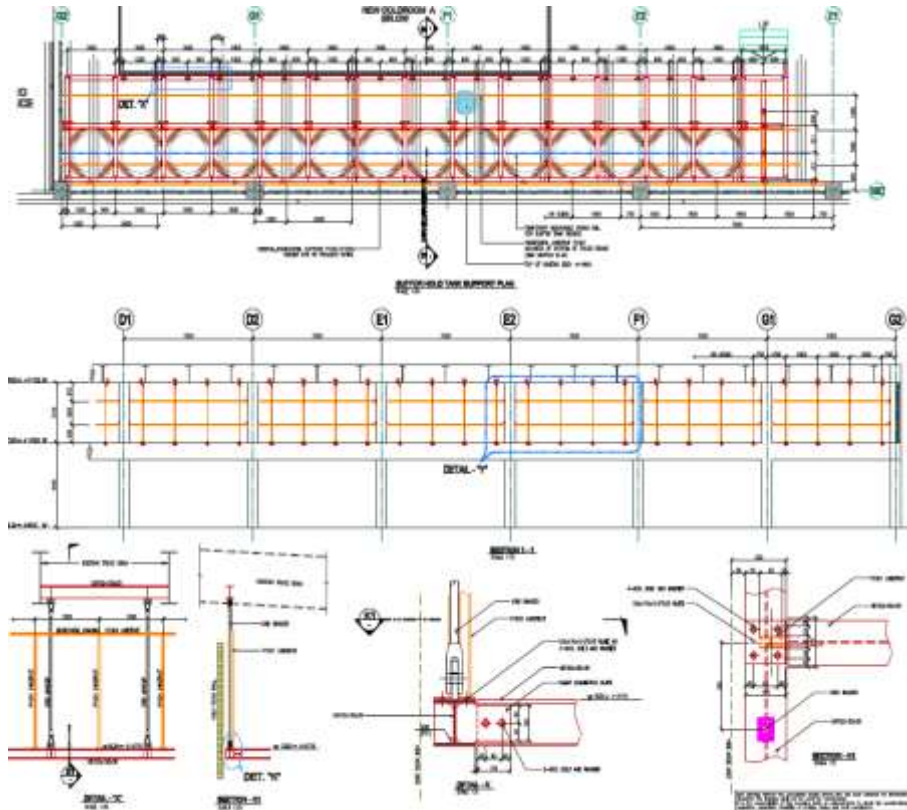
# Project Implementation Plan

## ■ Skid Move In - Sequencing



# Project Implementation Plan

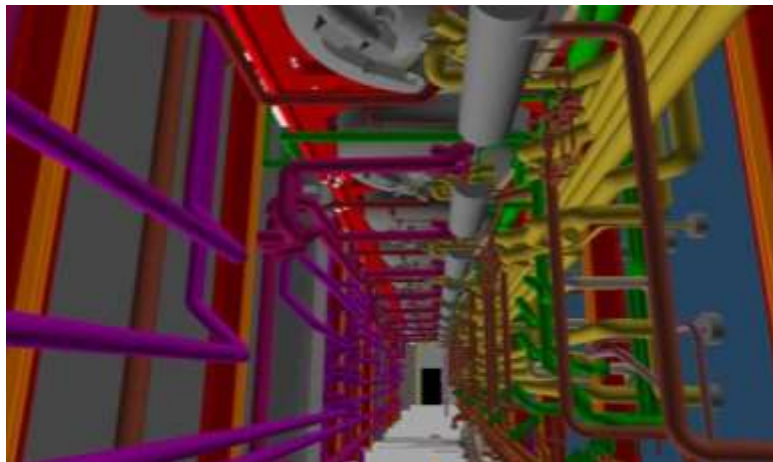
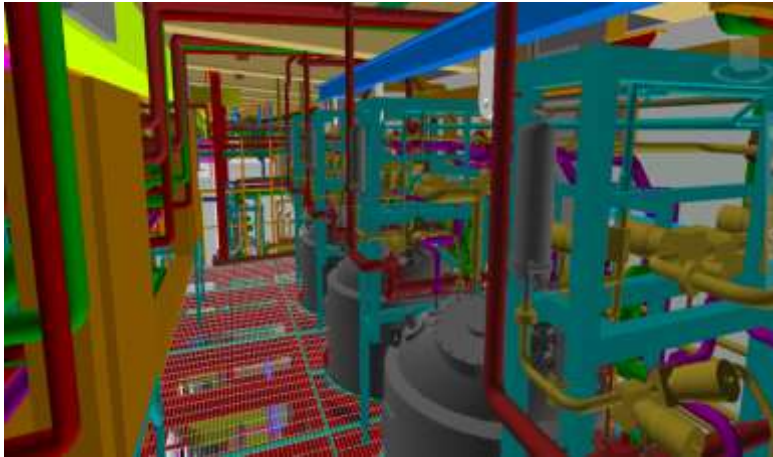
- Large Scale Tanks – Steel Structure support





# Project Implementation Plan

- Design Verification – Service During Construction







## Project References

# Project References



## 22<sup>nd</sup> February 2022 - IFE Malaysia

IFE Malaysia has been appointed by XFAB to provide EPCM services related to the new Fab Capacity Expansion Project located at Kuching in Sarawak - Malaysia .



## 7<sup>th</sup> January 2022 - IFE Singapore

IFE Singapore has been appointed by Avantor to provide Engineering Services related to the new Lab Expansion Project located at Gul Drive in Singapore .



## 15<sup>th</sup> December 2021 - IFE Singapore

IFE Singapore has been appointed by LONZA to provide EPCM services related to the new Manufacturing Expansion Project (Suite II) located at Tuas - Singapore .



## 15<sup>th</sup> December 2022 - IFE Singapore

IFE Singapore has been appointed by Micron to provide Engineering services related to the standardization of the Micron Master Specification development for HPM areas serving new Semiconductor fabrication plants .

# Project References



**15<sup>th</sup> October 2021 - IFE Singapore**

IFE Singapore has been appointed by NUS to provide Design Services related to a Feasibility study of a new Cleanroom Expansion Project (E4A Building) located in Singapore.



**28<sup>th</sup> June 2021 - IFE Malaysia**

IFE Malaysia has been appointed by Infineon in Malaysia to provide Engineering services related to the EPCM and Manpower for Cleanroom Expansion – DM (Scrubber) located at Malacca, Malaysia.



**13<sup>th</sup> August 2021 - IFE Singapore**

IFE Singapore has been appointed by FLUOR Corporation to provide Design support services related to the development of a Conceptual Design for a large scale A/T Semiconductor facility in Ho Chi Minh - Vietnam.



**8<sup>th</sup> June 2021 - IFE Singapore**

IFE Singapore has been appointed by Soitec in Singapore to provide EPCM services related to the new CUB plant located at Pasir Ris in Singapore.



# Project References



**12<sup>th</sup> March 2021 - IFE Singapore**



IFE Singapore has been appointed by Viessman Technologies to provide EPCM services related to the new &ever Vertical Farming Project located at Changi Business Park in Singapore .



**5<sup>th</sup> May 2021 - IFE Malaysia**



IFE Malaysia has been appointed by Infineon in Kulim – Malaysia to provide EPCM services related to the new Semiconductor fabrication plant.



**maxeon**

**2<sup>nd</sup> April 2021 - IFE Singapore**

IFE Malaysia has been appointed by Maxeon Malaysia to provide Design & Construction Management services related to the new CR Expansion Project in **Melaka**.



**15<sup>th</sup> March 2021 - IFE Singapore**



IFE Singapore has been appointed by Takeda in Singapore to provide Design & Construction management services related to the QC Lab expansion Project in Singapore .



# Project References



**11<sup>th</sup> January 2021 - IFE Malaysia**

IFE Singapore has been appointed to provide Construction Management services related to a New Production Facility in Kuala Lumpur – Malaysia .



**14<sup>th</sup> December 2020 - IFE Malaysia**

IFE Malaysia has been appointed by National Instruments in Penang – Malaysia to provide Project & Construction Management services related to the new Warehouse Expansion Project in Penang.



**1<sup>st</sup> December 2020 - IFE Singapore**

IFE Singapore has been appointed by Infineon Technologies Batam to provide Design & Construction Management services related to the Upgrading Project (BTM 1 Phase 2) in Bantam - **Indonesia** .



**1<sup>st</sup> December 2020 - IFE Singapore**

IFE Singapore has been appointed by Takeda in Singapore to provide EPCM services related to a major Process and manufacturing capacity Project in Singapore .

# Project References



**15<sup>th</sup> November 2020 - IFE Singapore**

IFE Singapore has been appointed by Soitec in Singapore to prepare the Conceptual & Detailed Design for a new “Greenfield” Wafer fabrication plant located at Pasir Ris in Singapore .



**16<sup>th</sup> October 2020 - IFE Malaysia**

IFE Malaysia has been appointed by a confidential large scale Semiconductor Manufacturer in Malaysia to provide A&E services related to a Feasibility Study to remodel an existing Manufacturing campus.



**20<sup>th</sup> November 2020 - IFE Malaysia**

IFE Malaysia has been appointed by Western Digital to provide EPCM services related to the new Greenfield Project in Kuching (Sarawak) - Malaysia .



**2<sup>nd</sup> October 2020 - IFE Singapore**

IFE Singapore has been appointed by Maxeon Singapore to provide Construction Management services related to the new Office Expansion Project in **Singapore**.

# Project References



**1<sup>st</sup> October 2020 - IFE Singapore**



IFE Singapore has been appointed by Infineon Hungary to provide Construction Management services related to the new Greenfield Project in **Cegled - Hungary**.



**5<sup>th</sup> August 2020 – IFE Singapore**



IFE Singapore has been appointed by IME in Singapore to provide a Feasibility Study related to new the Campus Expansion in Singapore.



**15<sup>th</sup> August 2020 - IFE Singapore**

IFE Singapore has been appointed by Western Digital in the Philippines to provide A&E services related to the integration of a new Data Center in the existing campus in **Manila - Philippines**.



**2<sup>nd</sup> March 2020 - IFE Malaysia**

IFE Malaysia has been appointed by Western Digital i- **Johor** to provide Construction Management services related to a Reverse Osmosis Water Expansion Project in **Johor - Malaysia**.



# Project References



**28<sup>th</sup> February 2020 - IFE Malaysia**

IFE Malaysia has been appointed by a confidential large scale Semiconductor Manufacturer in Malaysia to provide A&E services related to a the Expansion project of a large scale Semiconductor Cleanroom Project.



**15<sup>th</sup> January 2020 - IFE Singapore**

IFE Singapore has been appointed by Kajima – Malaysia to support the “Greenfield development” related to a New Production Facility in Kuala Lumpur – Malaysia .



**14<sup>th</sup> February 2020 - IFE Singapore**

IFE Singapore has been appointed by STATS ChipPAC in Singapore to provide Design Management services related to the GFA assessment of the existing Manufacturing campus in Yisun – Singapore .



**2<sup>nd</sup> December 2019 - IFE Malaysia**

IFE Malaysia has been appointed by the Haw Par Group to support the “Greenfield development” related to a New Tiger Balm factory in in Johor – Malaysia..



# Project References



## 25<sup>th</sup> November 2019 - IFE Singapore

IFE Singapore has been appointed by Kajima – Thailand to support the “Greenfield development” related to a Tier 3 - Data Center in Bangkok – Thailand.



## 28<sup>th</sup> November 2019 - IFE Myanmar



IFE Myanmar has been appointed by MJTD in Thilawa – Myanmar to provide Project & Construction Management services related to the new Warehousing Facility **Factory C - Extension**



## 1<sup>st</sup> August 2019 - IFE Singapore

IFE Singapore has been appointed by KaTRIS as Lead MEP Designer related to the new KAJIMA Research and Development Center in Singapore



## 6<sup>th</sup> July 2019 - IFE Singapore

IFE Singapore has been appointed by Western Digital in **Thailand** to provide the Design & Engineering services related to the Cooling System rectification of an Advanced Tester system in Bangpa In -Thailand.

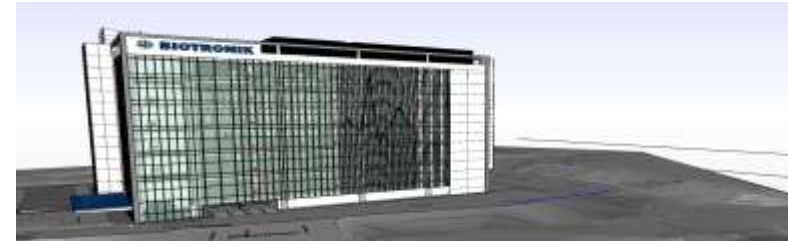
# Project References



**13<sup>th</sup> September 2019 - IFE Myanmar**



IFE Myanmar has been appointed by MJTD in Thilawa – Myanmar to provide Project & Construction Management services for the new Warehousing Facility (Factory D).



**6<sup>th</sup> September 2019 - IFE Singapore**

IFE Singapore has been appointed by Biotronik in Singapore, as the Lead Consultant for the new Greenfield Project in Singapore.



**31<sup>st</sup> July 2019 - IFE Singapore**



IFE Singapore has been appointed by Soitec in Singapore for the Conceptual Design for the Facility & Utility systems expansion project to support the Wafer fabrication plant located at Pasir Ris in Singapore .



**17<sup>th</sup> July 2019 - IFE Myanmar**



IFE Myanmar has been appointed by MJTD in Thilawa – Myanmar to provide Project & Construction Management services related to a largescale expansion Infrastructure Project .

# Project References



**17<sup>th</sup> April 2019 - IFE Malaysia**

IFE Malaysia has been appointed by Infineon in Kulim – Malaysia to provide Engineering services related to the Conceptual Design for new Semiconductor fabrication plant.



**23<sup>rd</sup> January 2019 - IFE Singapore**

IFE Singapore has been appointed by Soitec in Singapore to provide Engineering services related to the Conceptual Design for new Facility & Utility systems serving the existing Wafer fabrication plant located at Pasir Ris in Singapore .



**24<sup>th</sup> March 2019 - IFE Singapore**

IFE Singapore has been appointed by Biotronik in **Singapore** to provide Engineering services related to a Cleanroom improvement Project in Singapore.

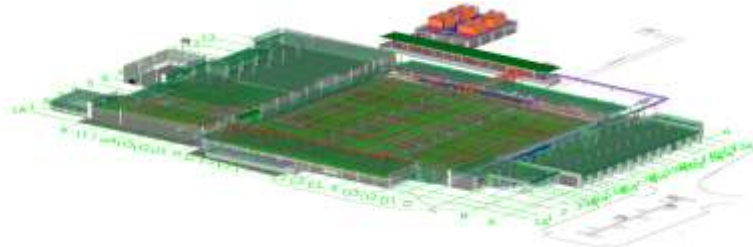


**18<sup>th</sup> January 2019 - IFE Singapore**

IFE Singapore has been appointed by Takeda in Singapore to provide Engineering services related to a remodeling Project in Singapore .



# Project References



**15<sup>th</sup> January 2019 - IFE Malaysia**



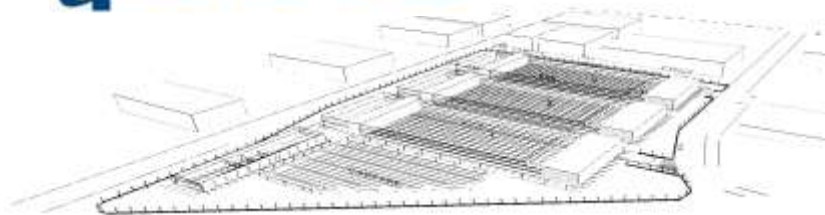
IFE Malaysia has been appointed by a confidential large scale Semiconductor Manufacturer in Malaysia to provide A&E services related to a the remodeling of a large scale Cleanroom Project.



**18<sup>th</sup> December 2018 - IFE Myanmar**



IFE Myanmar has been appointed by MJTD in Thilawa – Myanmar to provide Project & Construction Management services related to the new Warehousing Facility (Factory C).



**20<sup>th</sup> November 2018 - IFE Singapore**

IFE Singapore has been appointed by Micron in Singapore to provide Engineering services related to the Site Master plan development for the new Assembly & Test fabrication plant located at Batu Kawan – Malaysia .



**26<sup>th</sup> October 2018 - IFE Singapore**



IFE Singapore has been appointed by 3M in Singapore to provide Design & Project Management services related to the AF8 Expansion Project located at Woodlands in Singapore .



# Project References



**15<sup>th</sup> October 2018 - IFE Singapore**



IFE Singapore has been appointed by TES-AMM in Singapore to conduct a Site Reinstatement & Feasibility Assessment related to the new Expansion Project located at Tuas in - Singapore .



**17<sup>th</sup> September 2018 - IFE Singapore**



IFE Singapore has been engaged by Air Liquide in Singapore to provide Design support (BIM modelling) services related to the Micron Semiconductor Manufacturing Plant Project in Singapore



**10<sup>th</sup> July 2018 - IFE Singapore**



IFE Singapore has been appointed by ARTC in Singapore to provide Engineering services (HAZIP) related to the new metal spheres Atomizer installation located at the ARTC Technology Centre in Singapore .



**6<sup>th</sup> July 2018 - IFE Singapore**

IFE Singapore has been appointed by Western Digital in **Thailand** to provide the Design & Engineering services related to the Cooling System rectification of an Advanced Tester system in Bangpa In -Thailand.

# Project References



**14<sup>th</sup> June 2018 - IFE Malaysia**



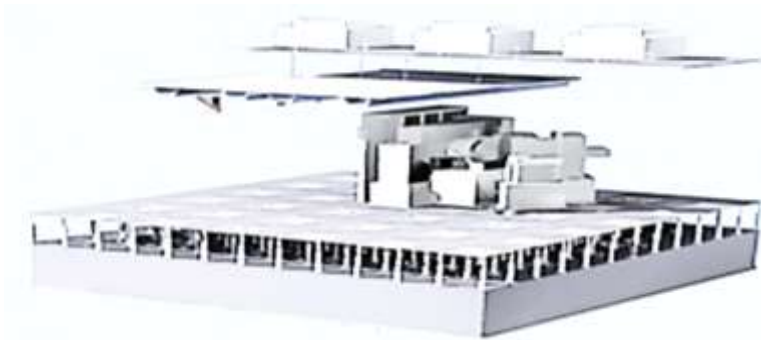
IFE Malaysia has been appointed by Oncogen Pharm in Malaysia to provide Project & Construction Management services related to the new Greenfield Project located at Shah Alam – Malaysia .



**16<sup>th</sup> May 2018 - IFE Singapore**



IFE Singapore has been appointed by Givaudan in Singapore to provide Design & Construction Management services related to the Liquid Expansion Project located at Woodlands - Singapore .



**15<sup>th</sup> April 2018 - IFE Singapore**



IFE Singapore has been engaged by Applied Materials to provide Design Management services related to modification works related to the new R&D Cleanroom Project in Singapore



**14<sup>th</sup> May 2018 - IFE Singapore**

IFE Singapore has been appointed by Western Digital in **Thailand** to provide the Design & Engineering services related to a Cleanroom Expansion Project in Bangpa In -Thailand .

# Project References



**15<sup>th</sup> March 2018 - IFE Singapore**



IFE Singapore has been appointed by Shire in Singapore to provide EPCM services for the Design & Construction Management related to the Expansion Project in Singapore .



**22<sup>nd</sup> February 2018 - IFE Malaysia**

IFE Malaysia has been appointed by Kajima to support the Design & Construction Management related to the new Greenfield Project for JLL in Penang – Malaysia.



**5<sup>th</sup> January 2018 - IFE Singapore**



IFE Singapore has been appointed by Kajima to support the Design Phase related to the Feasibility Study of a new Lab Project for ROCHE in Singapore



**22<sup>th</sup> December 2017 - IFE Singapore**



IFE Singapore has been appointed by Kalbe Farma to support the Design & Construction Management related to the new Greenfield Project in Thilawa – Myanmar.



# Project References



**11<sup>th</sup> September 2017 - IFE Singapore**



IFE Singapore has been appointed by RF360 to support the Design & Construction Management of the Exhaust system expansion project in Singapore



**22<sup>nd</sup> June 2017 - IFE Malaysia**



IFE Singapore has been appointed by HGST in **Malaysia** to provide Engineering services related to the Cleanroom Expansion Project in Kuching - Malaysia.



**3<sup>rd</sup> April 17 - IFE Singapore**



IFE Singapore has been appointed by Abbott to support the Design & Construction Management of the IBC Phase 1 expansion project in Singapore



**9<sup>th</sup> March 2017 – IFE Singapore**



IFE Singapore has been appointed by IME in Singapore to provide a EPCM services related to the FSC Regularization Project in Singapore.



# Project References



**10<sup>th</sup> April 2017 - IFE Singapore**



IFE Singapore has been appointed by RF360 to conduct a Feasibility study related to a Expansion Project in Singapore



**16<sup>th</sup> March 2017 - IFE Singapore**



IFE Singapore has been appointed as EPCM Services Provider for the Design & Project Management for the new Cosmo Expansion Project located in the JTC Chemical Hub in Tuas - Singapore



**24<sup>th</sup> October 2016 - IFE Singapore**

IFE Singapore has been appointed by Biotronik in **Singapore** to provide Design & Engineering services related to the Cleanroom Expansion Project in Singapore.



**16<sup>th</sup> November 2016 - IFE Singapore**



IFE Singapore has been appointed as EPCM Services Provider to Design & Project Manage the new Expansion Project in Thilawa - Myanmar.

# Project References



**24<sup>th</sup> October 2016 - IFE Malaysia**

IFE Malaysia has been appointed by Western Digital in **Malaysia** to provide the Design & Engineering services related to the Line MA 30 & 31 Cleanroom Expansion Project in Penang - Malaysia.



**16<sup>th</sup> September 2016 - IFE Singapore**



IFE Singapore has been appointed in combination with H.Mill Architects to provide Design and Construction Management services, related to the M&E Systems serving the new Japan Tobacco Expansion Project in Yangon - Myanmar.



**9<sup>th</sup> September 2016 - IFE Singapore**



IFE Shanghai has been appointed by Thyssen Krupp in China, to support the development and implementation of new Master Specifications related to Infrastructure Projects in China.



**1<sup>st</sup> September 2016 - IFE Singapore**



IFE Singapore has been appointed by Wahloon Engineering in Singapore to provide Design review and Management services, related to the M&E Systems serving the new IO Data Center in Singapore.

# Project References



**5<sup>th</sup> September 2016 - IFE Singapore**



IFE Singapore has been appointed by Haskell to support with Construction Management, related to a “Greenfield” Production Facility in Singapore.



**1<sup>st</sup> September 2016 – IFE Singapore**



IFE Singapore has been appointed by Silterra Malaysia to support Silterra with Construction Management support for the Cleanroom upgrading Project in Kulim – Malaysia.



**29<sup>th</sup> August 2016 – IFE Singapore**



IFE Singapore has been appointed by XFAB Malaysia the Engineering support related to the Design Management for the EPI Cleanroom upgrading Project in Kuching – Malaysia.



**15<sup>th</sup> July 2016 - IFE Singapore**



IFE Singapore has been appointed by Lead Management in Singapore to provide the Design Management, related to the new Cleanroom Production Facility for Heptagon in Singapore.

# Project References



## 13<sup>th</sup> July 2016 - IFE Singapore



IFE Singapore has been engaged by SOXAL Air Liquide to provide Design support (BIM modelling) services related to a large scale Semiconductor Manufacturing Project in Singapore



## 1<sup>st</sup> July 2016 – IFE Singapore

IFE Mission Critical Facilities has been appointed by TYLIN International Group in Singapore to support the Design Development and Design Management for the new ICA Data Center in Singapore.



**Immigration & Checkpoints Authority**  
A member of the Home Team  
**TYLIN** INTERNATIONAL GROUP



## 29<sup>th</sup> May 2016 – IFE Singapore



IFE Singapore has been appointed by Tebodin in Singapore to support the EPCM activities related to the new Mondelez R&D Lab Project in Singapore



## 4<sup>th</sup> May 2016 – IFE Singapore



IFE Singapore has been appointed by XFAB Malaysia to provide EPCM services related to the Cleanroom upgrading Project in Kuching – Malaysia.



# Project References



## 30<sup>th</sup> June 2016 - IFE Singapore

IFE Singapore has been appointed by Western Digital in **Singapore** to provide the Design & Engineering services related to Reinstatement Project of the WD Campus in Tuas - Singapore.

## 3<sup>rd</sup> June 2016 - IFE Malaysia

IFE Singapore has been appointed by Western Digital in **Malaysia** to provide the Design & Engineering services related to the OSA Lab Project in Malaysia.



**M + W GROUP**

## 4<sup>th</sup> April 2016 - IFE Singapore

IFE Singapore has been engaged by M+W Group to support the Construction Management tasks related to the new Micron Fab 10X Semiconductor Fabrication plant in Singapore.



## 1<sup>st</sup> February 2016 - IFE Singapore

IFE Singapore has been engaged by Puritas in **Singapore** to support with Design & Engineering services related to the new AbbVie plant in Tuas - Singapore.

# Project References



**25<sup>th</sup> May 2016 - IFE Singapore**



IFE Singapore has been appointed by Meinhardt in **Singapore** to provide BIM support services related to Mixed development Project in Singapore.



**11<sup>th</sup> May 2016 - IFE Singapore**



IFE Singapore has been engaged by Siemens to support with Engineering services related to a existing WWTP in Thailand.



**5<sup>th</sup> May 2016 - IFE Singapore**



IFE Singapore has been engaged by EPCOS to provide Engineering support related to a upgrade of the existing UPW plant in Singapore.



**2<sup>nd</sup> April 2016 - IFE Singapore**



IFE Singapore in collaboration with UGL Group has been appointed by First Solar to provide Design & Construction Management services (EPCM) related to the new Greenfield Project in Kulim – Malaysia.

# Project References



**15<sup>th</sup> March 2016 - IFE Singapore**

IFE Singapore has been appointed by ASTAR in Singapore to support the Reconfiguration CR4 Project related to the new Semiconductor Research Centre in Singapore .



**2<sup>nd</sup> March 2016 - IFE Mission Critical Singapore**



IFE Mission Critical Facilities has been appointed by Meinhardt in Singapore to provide Engineering solutions related to the Uptime certification and Critical Cooling Operation Sequence for Telin Tier 4 Data Center in Singapore.



**15<sup>th</sup> February 2016 - IFE Singapore**

IFE Singapore has been appointed by Western Digital in **Thailand** to provide the Design & Construction Management services related to a **Tool Hook Up Project** in Penang – Malaysia .



**4<sup>th</sup> February 2016 - IFE Singapore**

IFE Singapore has been engaged by SOXAL Air Liquide to provide Design & Construction Management services related to a Semiconductor Manufacturing and Tool Hook Up Project in Singapore

# Project References



**5<sup>th</sup> March 2016 – IFE Shanghai**

IFE Shanghai Ltd has been involved for a Design & Build project for BD Diagnostic development of a HYPAK™ glass pre-fillable syringe (PFS) Manufacturing facility at BD Suzhou-2 site, China.



**11<sup>th</sup> January 2016 - IFE Singapore**

IFE Singapore has been appointed by Western Digital in **Thailand** to provide the Design & Construction Management services related to a Chemical Storage upgrade Project in Thailand .



**10<sup>th</sup> Nov 2015 - IFE Shanghai**

IFE Shanghai Ltd has been appointed by Quintiles the Conceptual & Detail Design development, in combination with the Construction Management support related to the Q2 Solutions Lab Relocation Project, in Beijing, China.



**1<sup>st</sup> October 2015 – IFE Singapore**

IFE Singapore has been appointed by Parson Brinckerhoff in Singapore to support the Tool Hook Up Design & Construction Management for the FP2A – CR2 Project in Singapore.





# Project References



**16<sup>th</sup> August 2015 – IFE Shanghai**



IFE Shanghai Ltd has been appointed to provide Engineering services for Boehringer Ingelheim Pharmaceutical related to the OASIS project for a new production facility in Shanghai – China.



**23<sup>rd</sup> September 2015 – IFE Singapore**



IFE Singapore has been appointed by Samoo to support and attend an Design development workshop related to next generation Semiconductor fabrication facilities in South Korea.



**10<sup>th</sup> March 2015 - IFE Singapore**



IFE Singapore has been supporting REC on the Multi stack Furnace Project related to the Cell capacity expansion in Singapore



**16<sup>nd</sup> March 2015 – IFE Singapore**



IFE Singapore has been appointed by IME in Singapore to provide a Feasibility study related to a Cleanroom upgrade and expansion Project in Singapore.

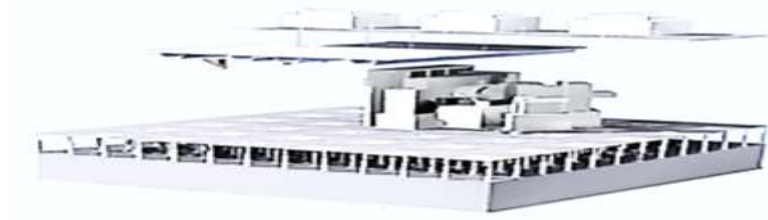
# Project References



**2<sup>nd</sup> March 2015 - IFE Singapore**



IFE Mission Critical Facilities has been appointed by Kingsland Data Center in Singapore to provide Construction Management and Operation Management services including Single Point of Failure Study related to the new Tier 3 Data Center in Singapore.



**3<sup>rd</sup> March 2015 - IFE Singapore**



IFE Singapore has been engaged by Applied Materials to provide Design Management services related to a new R&D Cleanroom Project in Singapore



**4<sup>th</sup> February 2015 - IFE Singapore**

IFE Singapore has been appointed by Western Digital in **Thailand** to provide the Design & Construction Management services related to a Cleanroom expansion Project in Thailand .



**16<sup>th</sup> January 2015 - IFE Singapore**

IFE Singapore in collaboration with Lendlease has been appointed by REC the Design & Construction Management for the new Multi stack Expansion Project in Singapore

# Project References



**3<sup>rd</sup> January 2015 - IFE Singapore**

IFE Singapore has been engaged by SOXAL Air Liquide to provide Design & Construction Management services related to a large scale Semiconductor Manufacturing Tool relocation and Hook Up Project in Singapore



**13<sup>th</sup> January 2015 - IFE Singapore**

IFE Singapore has been appointed by Western Digital in Singapore to provide Engineering support related to major Cleanroom upgrade Project related at the Western Digital campus in Singapore .



**4<sup>th</sup> February 2015 - IFE Singapore**

IFE Singapore has been appointed by Bio Storage in Singapore to provide the Design & Construction Management related to their new Bio Repository Space in Singapore .



**4<sup>th</sup> February 2015 - IFE Singapore**

IFE Singapore has been appointed by Western Digital in **Malaysia** to provide the Design & Construction Management services related to a Cleanroom upgrade Project in Malaysia .

# Project References



**3<sup>rd</sup> November 2014 - IFE Singapore**



IFE Singapore has been appointed by GSK in Singapore to support the Feasibility Study related to the implementation of a new Gas abatement system related to a manufacturing plant in Singapore .



**31<sup>st</sup> October 2014 - IFE Singapore**

IFE Singapore has been appointed by Western Digital in Thailand to provide Engineering support related to major Cleanroom upgrade Project related to the Western Digital campus in Thailand.



**30<sup>th</sup> October 2014 - IFE Singapore**

IFE Singapore has been appointed by Fisher Clinical in Singapore to provide the Conceptual Design and Tender documents related to the new cGMP Warehouse in Singapore .



**15<sup>th</sup> August 2014 – IFE Singapore**



IFE Singapore has been appointed by IME in Singapore support the Design and Construction Management for the MDRA Lab relocation.



# Project References



**PARSONS  
BRINCKERHOFF**

**1<sup>st</sup> August 2014 - IFE Singapore**

IFE Singapore has been appointed by Parson Brinckerhoff in Singapore, to support the Construction Management related to the Fusionopolis Project in Singapore .

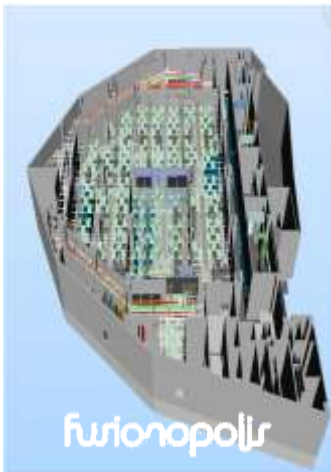


**6<sup>th</sup> July 2014 – IFE China**

IFE in China has been appointed by AstraZeneca, as Engineering Consultant to provide Engineering services related to the Feasibility study for the new CCHP plants for several sites in China.



**AstraZeneca**



**6<sup>th</sup> June 2014 - IFE Singapore**

IFE Singapore has been appointed by ASTAR in Singapore to support the Feasibility Study related to Pre 450 mm Semiconductor technology related to the new Research Centre in Singapore .



**15<sup>th</sup> April 2013 – IFE Singapore**

IFE Singapore has been appointed by Rolls Royce in Singapore to support the Upgrade Project related to the existing Chemical drain system serving the Rolls Royce fan blade facility in Singapore.



**Rolls-Royce**

# Project References



**1<sup>st</sup> April 2014 – IFE Singapore**



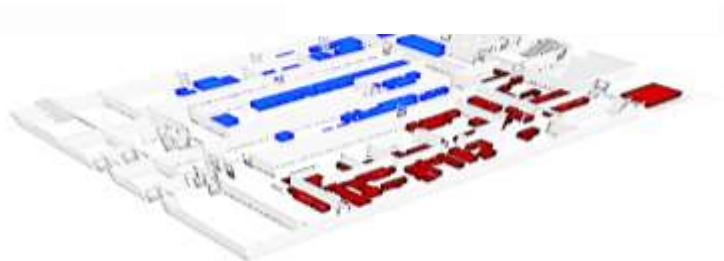
IFE Singapore has been appointed by Jurong Consultants in Singapore as Cleanroom Consultant to provide Design and Construction Management services for the new Multi Tenant Cleanroom Facility in Singapore.



**1<sup>st</sup> March 2014 - IFE Singapore**



IFE Singapore has been appointed by IFF Indonesia, the support Design & Construction Management, related to the new Production Facility in Jakarta – Indonesia



**1<sup>st</sup> Feb 2014 - IFE Singapore**



IFE Singapore has been appointed by the General contractor of the new facility, to support Design & Construction Management, related to the new Production Facility in Singapore



**1<sup>st</sup> February 2014 – RWS Singapore**



IFE Singapore has been appointed by Resorts World Sentosa in Singapore as M&E Consultant to provide Design and Construction Management services for the new District Cooling expansion Project in Singapore.

# Project References



**15<sup>th</sup> April 2014 - IFE Singapore**



IFE Singapore has been appointed by Opto Pharm, the support Design & Construction Management, related to the new Production Facility in Wuhan – China



**1<sup>st</sup> September 2013 - IFE Singapore**



IFE Singapore has been appointed by SERIS in combination with Jurong Consultant in Singapore to support Design & Construction Management, related to the new Solar Research Institute of Singapore Facility.



**1<sup>st</sup> Nov 2013 - IFE Singapore**



IFE Singapore has been appointed by Momentive in collaboration with C3 Thailand to provide Engineering and Construction Management services for the new Production plant in Thailand.



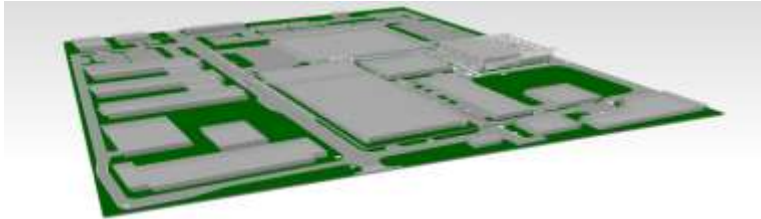
**1<sup>st</sup> June 2013 - IFE Singapore**



IFE Singapore has been appointed by ROCHE Shanghai, the support Design & Construction Management, related to the new CUB expansion related to the ROCHE cGMP Facility in Shanghai



# Project References



**15<sup>th</sup> September 2013 - IFE Singapore**



IFE Singapore has been appointed by ROCHE Shanghai, the support Design & Construction Management, related to the new Infrastructure expansion Project related to the ROCHE cGMP Facility in Shanghai



**15<sup>th</sup> March 2013 - IFE Singapore**



IFE Singapore has been appointed by Seagate in Combination with the Project Architect and M&E Engineer as Cleanroom Consultant, to provide Engineering and Construction Management services for the new Shugart R&D Center in Singapore.



**1<sup>st</sup> April 2013 - IFE Singapore**



IFE Singapore has been appointed by the Specialist fit-out contractor in Singapore, to support the new Microsoft Data Center Design with Building Information Modeling (BIM) services related to the new Data Center Project Facility in Singapore.



**15<sup>th</sup> April 2013 – IFE Singapore**



**Rolls-Royce**

IFE Singapore has been appointed by Rolls Royce in Singapore to support the Design and Construction Management for the retrofit of the Chemical system serving the Rolls Royce fan blade facility in Singapore.



# Project References



**1<sup>st</sup> May 2013 - IFE Singapore**



IFE Singapore has been appointed by the General Contractor to support Design & Construction Management related to the retrofit and expansion Project related to the District Cooling Center serving the KLCC complex in Kuala Lumpur.



**1<sup>st</sup> April 2013 - IFE Singapore**

IFE Singapore has been appointed by Parson Brinckerhoff in Singapore to provide Specialist Engineering services for the new Semiconductor and Data storage Research Centre in Singapore .



**21<sup>st</sup> January 2013 - IFE Singapore**



IFE Singapore has been appointed by Faurecia in collaboration with C3 Thailand and 3HPA Architects to provide Engineering and Construction Management services for the new Office expansion in Thailand.



**1<sup>st</sup> September 2012 - IFE Singapore**



IFE Singapore has been appointed by Maccine in Singapore as Client representing Consultant for the new ARF facility in Singapore.

# Project References



**15<sup>th</sup> May 2012 - IFE Singapore**

**Baxter**

IFE Singapore has been appointed by Baxter Bio Science in Singapore to provide **EPCM** services for the new manufacturing suite in Singapore.



**1<sup>st</sup> April 2012 - IFE Singapore**

IFE Singapore has been appointed by CH2MHILL in Singapore to support the Facility system reviews of NXP plants in SE Asia..



**14<sup>th</sup> February 2012 - IFE Singapore**



IFE Singapore has been appointed by Lend Lease in China to provide Engineering services for the MSD facility in Hangzhou – China.



**1<sup>st</sup> September 2012 - IFE Singapore**



IFE Singapore has been appointed by MSD in Singapore, the support MSD with Construction Management services, related to the Expansion Project for the existing cGMP Facility in Singapore.

# Project References



**1<sup>st</sup> May 2012 - IFE Singapore**



IFE Singapore has been appointed by Lendlease in Shanghai, the support Design & Construction Management, related to the new Office expansion related to the ROCHE cGMP Facility in Shanghai



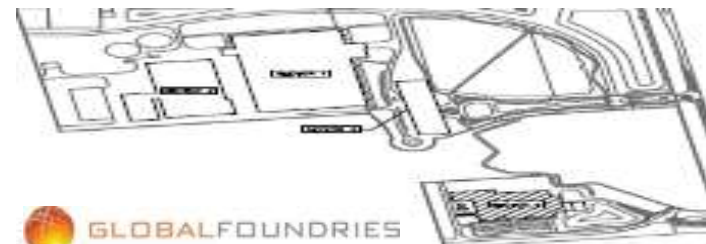
**8<sup>th</sup> August 2011 - Covance Asia Pacific (Singapore)**

IFE Singapore has been appointed by Covance Asia Pacific to support the Conceptual Design and Construction Management for the Genomic and General Laboratory Expansion Facility in Singapore.



**30<sup>th</sup> May 2011 - IFE Singapore**

IFE Singapore has been appointed by REC with the Site Master Plan Study related to the REC facility in Singapore



**1<sup>st</sup> March 2011 - IFE Singapore**

IFE Singapore has been appointed by GLOBALFOUNDRIES to support the new Waferfab Project in Abu Dhabi , UAE with Engineering services as part of the Client representing team.

# Project References



## **FUSIONOPOLIS – Tower C**

**1<sup>st</sup> March 2011 - IFE Singapore**



IFE Singapore has been appointed by SAMSUNG C&T the Conceptual Design, related to MEP Systems for the new Fusionopolis R&D facility in Singapore



**22<sup>nd</sup> October 2010 - IFE Singapore**



IFE Singapore has been appointed by REC the Feasibility Study for the Cell / Module Expansion of the new REC Wafer facility in Singapore



**19<sup>th</sup> July 2010 - IFE Singapore**



IFE Singapore has been appointed by Bovis Lend Lease in China to provide Engineering services for the FEED development of a new large scale Glass Manufacturing Project in Beijing – China.



**15<sup>th</sup> July 2010 - IFE Singapore**



IFE Singapore in collaboration with the nominated General Contractor to provide Engineering services for the 210K Expansion Project in Kulim – Malaysia.



# Project References



**23<sup>rd</sup> June 2010 – IFE Singapore**



IFE Singapore has been appointed by SUNPOWER Corporation for the Tool Hook Up Management for the new facility in Malacca – Malaysia.



**20<sup>th</sup> January 2010 – IFE Singapore**



**Rolls-Royce**

IFE Singapore has been appointed by Boustead in Singapore to support the Design and Construction Management for the new Rolls Royce fan blade facility in Singapore.



**15<sup>th</sup> July 2009 – IFE Singapore**



IFE Singapore has been appointed by XFAB Malaysia the Design & Construction Management for the Cleanroom upgrading Project in Kuching – Malaysia.



**15<sup>th</sup> January 2009 - IFE Singapore**



IFE Singapore has been appointed by KSK Surya Power to support the Conceptual Design and Construction Management for the new facility in Hyderabad, India

# Project References



**20<sup>th</sup> June 2009 – REC Wafer (Singapore)**



IFE Singapore has been appointed by REC Wafer in Singapore to support the Conceptual Design and Construction Management for the new R&D Lab facility in Singapore



**1<sup>st</sup> February 2009 - IFE Singapore**



IFE Singapore has been appointed by CH2MHILL in Singapore to support the Detailed Space Management Design and Construction Management for the new REC Wafer facility in Singapore



**30<sup>th</sup> March 2008 - IFE Singapore**



IFE Singapore has been appointed by CH2MHILL in Singapore to support the Conceptual Design and Construction Management for the new facility in Singapore



**21<sup>th</sup> August 2008 - IFE Malaysia**



IFE Malaysia has been appointed by Infineon in Malaysia for the Design and Construction Management related to the new HEI & LTA Project in Kulim - Malaysia.

# Project References



**15<sup>th</sup> April 2008 - IFE Malaysia**



IFE Malaysia has been appointed by Q.Cells in Malaysia to support the Preliminary Design Development for the new facility in Selangor - Malaysia.



**23<sup>rd</sup> December 2008 - IFE Singapore**



IFE Singapore has been appointed to support the Detailed Design for Process Piping Systems for the new REC Wafer facility in Singapore



**3<sup>rd</sup> March 2008 - IFE Singapore**



IFE Singapore has been appointed by FCI Micro connection in collaboration with the General Contractor the Conceptual Design for the new facility in Singapore



**15<sup>th</sup> November 2008 - IFE Singapore**



IFE Singapore has been appointed by Caverion Asia to support the Detailed Design and Construction Management for the new BOSCH R&D facility in Singapore.

# Project References



**25<sup>th</sup> October 2007 - IFE Malaysia**



IFE Malaysia has been appointed by Qimonda in Malaysia Manufacturing in collaboration with the General Contractor to support the Conceptual Design and Construction Management for the new facility in Malaysia



**16<sup>th</sup> November 2007 - IFE Singapore**



IFE Singapore has been appointed by CH2MHILL in Singapore to support the Conceptual Design and Construction Management for the new facility in Singapore



**6<sup>th</sup> October 2007 - IFE Singapore**



IFE Singapore has been appointed by ST Microelectronics in collaboration with AMA Associates to develop the Conceptual Design for the new facility in China



**6<sup>th</sup> June 2007 - IFE Singapore**



IFE Singapore has been appointed by Chartered Semiconductor Manufacturing in collaboration with the General Contractor the Conceptual Design for the new facility in Singapore





## Contacts & Locations

# Contact & Locations



## Singapore (Head Quarter)

**International Facility Engineering Pte Ltd**

10 Science Park Road  
The Alpha, #03-03,  
Science Park II,

Singapore 117684

Tel: + 65 - 6776 7308  
Fax: + 65 - 6776 0761

[engineering@intl-fe.com](mailto:engineering@intl-fe.com)



## Malaysia (Kuala Lumpur)

**International Facility Engineering  
(Malaysia) Sdn Bhd**

L13-11, Menara Sentral Vista,  
150, Jalan Sultan Abdul Samad,  
Brickfields,  
50470 Kuala Lumpur

Malaysia

Tel: +60 - 3 2856 0511  
Fax.: [engineering@intl-fe.com](mailto:engineering@intl-fe.com)



## Malaysia (Kulim)

**International Facility Engineering  
(Malaysia) Sdn Bhd**

Suite 2.04, 2nd Floor,  
KHTP Business Center,  
Kulim High Tech Park,  
09000 Kulim

Malaysia

Tel: +60 - 4 402 6203  
Fax.: [engineering@intl-fe.com](mailto:engineering@intl-fe.com)

# Contact & Locations



## Manila (Philippines)

IFE Singapore Pte Ltd

PBcom Tower 6795  
Ayala Avenue  
Cor V.A Rufino St  
Makati City 1226

Philippines

[engineering@intl-fe.com](mailto:engineering@intl-fe.com)



## India (Chennai)

IFE Singapore Pte Ltd

Room 404  
01/192A Hi Street, Anna Salai  
Teynampet  
600018 Chennai

India

[engineering@intl-fe.com](mailto:engineering@intl-fe.com)